

Datasheet for ABIN1350288

CREB1 Protein (AA 14-101) (GST tag)



[Go to Product page](#)

1 Image

Overview

| | |
|-------------------------------|---|
| Quantity: | 10 µg |
| Target: | CREB1 |
| Protein Characteristics: | AA 14-101 |
| Origin: | Human |
| Source: | Wheat germ |
| Protein Type: | Recombinant |
| Purification tag / Conjugate: | This CREB1 protein is labelled with GST tag. |
| Application: | Western Blotting (WB), ELISA, Antibody Array (AA), Affinity Purification (AP) |

Product Details

| | |
|------------------|---|
| Purpose: | CREB1 (Human) Recombinant Protein (Q02) |
| Sequence: | DAAVTEAENQ QMTVQAQPQI ATLAQVSMMPA AHATSSAPT V TLVQLPNGQT VQVHGVIQAA QPSVIQSPQV QTVQSSCKDL KRLFSGTQ |
| Characteristics: | Human CREB1 partial ORF (AAH10636.1, 14 a.a. - 101 a.a.) recombinant protein with GST-tag at N-terminal. |
| Purification: | in vitro wheat germ expression system |

Target Details

| | |
|-------------------|--|
| Target: | CREB1 |
| Alternative Name: | CREB1 (CREB1 Products) |

Target Details

| | |
|-------------|--|
| Background: | Full Gene Name: cAMP responsive element binding protein 1 Synonyms: CREB,MGC9284 |
| Gene ID: | 1385 |
| Pathways: | TLR Signaling , Fc-epsilon Receptor Signaling Pathway , EGFR Signaling Pathway , Neurotrophin Signaling Pathway , Thyroid Hormone Synthesis , Activation of Innate immune Response , Myometrial Relaxation and Contraction , Regulation of Cell Size , Toll-Like Receptors Cascades , G-protein mediated Events , Interaction of EGFR with phospholipase C-gamma , Positive Regulation of fat Cell Differentiation |

Application Details

| | |
|--------------------|--|
| Application Notes: | Optimal working dilution should be determined by the investigator. |
| Comment: | Preparation method: in vitro, wheat germ expression system Product Quality tested by: 12.5% SDS-PAGE Stained with Coomassie Blue. |
| Restrictions: | For Research Use only |

Handling

| | |
|------------------|---|
| Buffer: | 50 mM Tris-HCl, 10 mM reduced Glutathione, pH =8.0 in the elution buffer. |
| Handling Advice: | Aliquot to avoid repeated freezing and thawing. |
| Storage: | -80 °C |
| Storage Comment: | Best use within three months from the date of receipt of this protein. |

Images

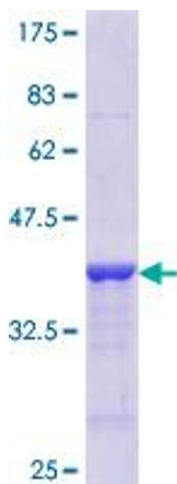


Image 1.