

Datasheet for ABIN1350300
CREB3L4 Protein (AA 1-395) (GST tag)



[Go to Product page](#)

1 Image

Overview

Quantity:	10 µg
Target:	CREB3L4
Protein Characteristics:	AA 1-395
Origin:	Human
Source:	Wheat germ
Protein Type:	Recombinant
Purification tag / Conjugate:	This CREB3L4 protein is labelled with GST tag.
Application:	ELISA, Western Blotting (WB), Antibody Array (AA), Affinity Purification (AP)

Product Details

Purpose:	CREB3L4 (Human) Recombinant Protein (P01)
Sequence:	MDLGIPDLLD AWLEPPEDIF STGSVLELGL HCPPPEVPVT RLQEQGLQGW KSGGDRGCGL QESEPEDFLK LFIDPNEVYC SEASPGSDSG ISEDPCHPDS PPAPRATSSP MLYEVVYEAG ALERMQGETG PNVGLISIQ L DQWSPAFMVP DSCMVSELPF DAHAHILPRA GTVAPVPCTT LLPCQTLFLT DEEKRLLGQE GVSLSHPLPL TKAEEVLKK VRRKIRNKQS AQDSRRRKKE YIDGLESRVA ACSAQNQELQ KKVQELERHN ISLVAQLRQL QTLIAQTSNK AAQTSTCVLI LLFSLALIL PSFSPFQSRP EAGSEDYQPH GVTSRNILTH KDVTENLETQ VVESRLREPP GAKDANGSTR TLLEKMGGKP RPSGRIRSVL HADEM
Characteristics:	Human CREB3L4 full-length ORF (NP_570968.1, 1 a.a. - 395 a.a.) recombinant protein with GST-tag at N-terminal.
Purification:	in vitro wheat germ expression system

Target Details

Target:	CREB3L4
Alternative Name:	CREB3L4 (CREB3L4 Products)
Background:	Full Gene Name: cAMP responsive element binding protein 3-like 4 Synonyms: AIBZIP,ATCE1,CREB3,CREB4,JAL,hJAL
Gene ID:	148327
NCBI Accession:	NM_130898
Pathways:	Thyroid Hormone Synthesis

Application Details

Application Notes:	Optimal working dilution should be determined by the investigator.
Comment:	Preparation method: in vitro, wheat germ expression system Product Quality tested by: 12.5% SDS-PAGE Stained with Coomassie Blue.
Restrictions:	For Research Use only

Handling

Buffer:	50 mM Tris-HCl, 10 mM reduced Glutathione, pH =8.0 in the elution buffer.
Handling Advice:	Aliquot to avoid repeated freezing and thawing.
Storage:	-80 °C
Storage Comment:	Best use within three months from the date of receipt of this protein.

Images

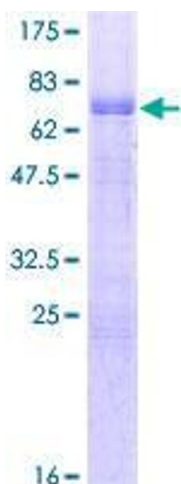


Image 1.