



[Go to Product page](#)

Datasheet for ABIN135032

## Rat anti-Mouse IgD Antibody (Biotin)

1 Image

1 Publication

### Overview

Quantity:	0.5 mg
Target:	IgD
Reactivity:	Mouse
Host:	Rat
Clonality:	Monoclonal
Conjugate:	Biotin
Application:	Flow Cytometry (FACS)

### Product Details

Immunogen:	Unknown
Clone:	11-26
Isotype:	IgG2a
Specificity:	Mouse IgD
Characteristics:	Rat Anti-Mouse IgD-BIOT
Purification:	Immunoaffinity chromatography

### Target Details

Target:	IgD
Abstract:	<a href="#">IgD Products</a>
Target Type:	Antibody

## Application Details

---

- Application Notes:
- **Applications:** FC - Quality tested , IHC-FS - Reported in literature , IHC-PS , IP - Reported in literature , Sep - Reported in literature , Costim - Reported in literature , PLA - Reported in literature
  - **Working Dilutions:** Flow Cytometry FITC, BIOT, PACBLU, and AF488 conjugates 1 g/106 cells PE and AF647 conjugates 0.2 g/106 cells For flow cytometry, the suggested use of these reagents is in a final volume of 100 L

---

Restrictions: For Research Use only

## Handling

---

Concentration: 0.5 mg/mL

Buffer: 0.5 mg in 1.0 mL of PBS/Sodium azide

Preservative: Sodium azide

Precaution of Use: This product contains Sodium azide: a POISONOUS AND HAZARDOUS SUBSTANCE which should be handled by trained staff only.

Handling Advice: Avoid cycles of freezing and thawing.

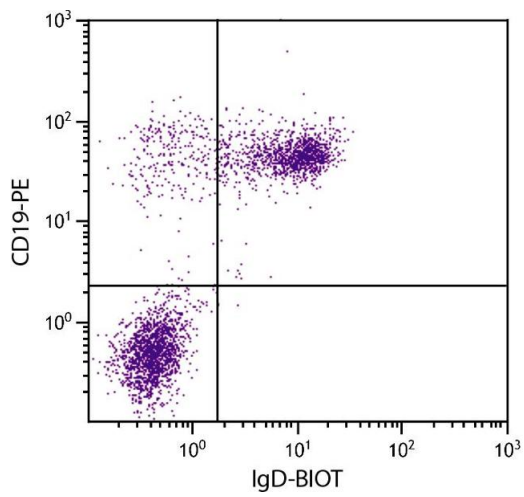
Storage: 4 °C

Storage Comment: Store at 2-8°C

## Publications

---

Product cited in: Zhang, Sun, Wang, Chen, Huang, Chen, Chen: "The Postembryonic Development of the Immunological Barrier in the Chicken Spleens." in: **Journal of immunology research**, Vol. 2019, pp. 6279360, (2019) ([PubMed](#)).



### Flow Cytometry

**Image 1.** BALB/c mouse splenocytes were stained with Rat Anti-Mouse IgD-BIOT.