

Datasheet for ABIN1350331
CRH Protein (AA 154-196) (GST tag)



[Go to Product page](#)

1 Image

Overview

Quantity:	10 µg
Target:	CRH
Protein Characteristics:	AA 154-196
Origin:	Human
Source:	Wheat germ
Protein Type:	Recombinant
Purification tag / Conjugate:	This CRH protein is labelled with GST tag.
Application:	Western Blotting (WB), ELISA, Antibody Array (AA), Affinity Purification (AP)

Product Details

Purpose:	CRH (Human) Recombinant Protein (Q01)
Sequence:	SEPPISLDL TFHLLREVLE MARAEQLAQQ AHSNRKLMEI IGK
Characteristics:	Human CRH partial ORF (AAH11031, 154 a.a. - 196 a.a.) recombinant protein with GST-tag at N-terminal.
Purification:	in vitro wheat germ expression system

Target Details

Target:	CRH
Alternative Name:	CRH (CRH Products)
Background:	Full Gene Name: corticotropin releasing hormone

Target Details

Synonyms: CRF

Gene ID: 1392

Pathways: [Positive Regulation of Peptide Hormone Secretion](#), [Hormone Activity](#), [Negative Regulation of Hormone Secretion](#), [cAMP Metabolic Process](#), [Myometrial Relaxation and Contraction](#), [Feeding Behaviour](#)

Application Details

Application Notes: Optimal working dilution should be determined by the investigator.

Comment: Preparation method: in vitro, wheat germ expression system
Product Quality tested by: 12.5% SDS-PAGE Stained with Coomassie Blue.

Restrictions: For Research Use only

Handling

Buffer: 50 mM Tris-HCl, 10 mM reduced Glutathione, pH =8.0 in the elution buffer.

Handling Advice: Aliquot to avoid repeated freezing and thawing.

Storage: -80 °C

Storage Comment: Best use within three months from the date of receipt of this protein.

Images

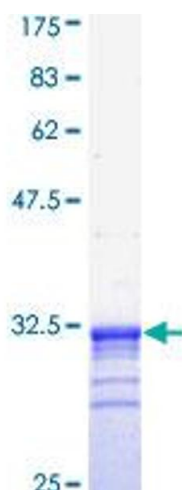


Image 1.