

Datasheet for ABIN1350351  
**CRIP3 Protein (AA 1-204) (GST tag)**



[Go to Product page](#)

1 Image

Overview

Quantity:	25 µg
Target:	CRIP3
Protein Characteristics:	AA 1-204
Origin:	Human
Source:	Wheat germ
Protein Type:	Recombinant
Purification tag / Conjugate:	This CRIP3 protein is labelled with GST tag.
Application:	ELISA, Western Blotting (WB), Antibody Array (AA), Affinity Purification (AP)

Product Details

Purpose:	CRIP3 (Human) Recombinant Protein (P01)
Sequence:	MSWTCPRCQQ PVFFAEKVSS LGKNWHRFCL KCERCHSILS PGGHAEHNGR PYCHKPCYGA LFGPRGVNIG GVGSYLYNPP TPSPGCTTPL SPSSFSPPRP RTGLPQGKKS PPHMKTFTGE TSLCPGCGEP VYFAEKVMSL GRNWHRPCLR CQRCHKTLTA GSHAHDGVP YCHVPCYGYL FGPKGVNIGD VGCYIYDPVK IKFK
Characteristics:	Human CRIP3 full-length ORF ( AAI48847.1, 1 a.a. - 204 a.a.) recombinant protein with GST-tag at N-terminal.
Purification:	in vitro wheat germ expression system

Target Details

Target:	CRIP3
---------	-------

## Target Details

Alternative Name:	CRIP3 ( <a href="#">CRIP3 Products</a> )
Background:	Full Gene Name: cysteine-rich protein 3 Synonyms: TLP,TLP-A,bA480N24.2
Gene ID:	401262

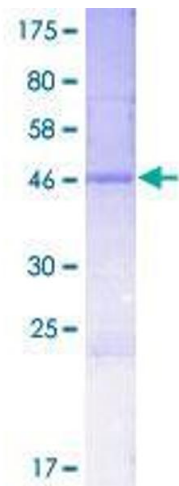
## Application Details

Application Notes:	Optimal working dilution should be determined by the investigator.
Comment:	Preparation method: in vitro, wheat germ expression system Product Quality tested by: 12.5% SDS-PAGE Stained with Coomassie Blue.
Restrictions:	For Research Use only

## Handling

Buffer:	50 mM Tris-HCl, 10 mM reduced Glutathione, pH =8.0 in the elution buffer.
Handling Advice:	Aliquot to avoid repeated freezing and thawing.
Storage:	-80 °C
Storage Comment:	Best use within three months from the date of receipt of this protein.

## Images



**Image 1.**