



[Go to Product page](#)

Datasheet for ABIN1350360

CRISPLD1 Protein (AA 1-500) (GST tag)

1 Image

Overview

Quantity:	10 µg
Target:	CRISPLD1
Protein Characteristics:	AA 1-500
Origin:	Human
Source:	Wheat germ
Protein Type:	Recombinant
Purification tag / Conjugate:	This CRISPLD1 protein is labelled with GST tag.
Application:	ELISA, Western Blotting (WB), Affinity Purification (AP), Antibody Array (AA)

Product Details

Purpose:	CRISPLD1 (Human) Recombinant Protein (P01)
Sequence:	MKCTAREWLR VTTVLFMARA IPAMVVPNAT LLEKLLEKYM DEDGEWWIAK QRGKRAITDN DMQSILDLHN KLRSQVYPTA SNMEYMTWDV ELERSAESWA ESCLWEHGPA SLLPSIGQNL GAHWGRYRPP TFHVQSWYDE VKDFSYPYEH ECNPYCPFRC SGPVCTHYTQ VVWATSNRIG CAINLCHNMN IWGQIWPKAV YLVCNYSYSPKG NWWGHAPYKH GRPCSACPPS FGGGCRENLC YKEGSDRYYP PREEETNEIE RQQSQVHDTH VRTRSDDSSR NEVISAQQMS QIVSCEVRLR DQCKGTTTCNR YECPAGCLDS KAKVIGSVHY EMQSSICRAA IHYGIIDNDG GWVDITRQGR KHIFYKSNRN GIQTIGKYQS ANSFTVSKVT VQAVTCETTV EQLCPFHKPA SHCPRVYCPR NCMQANPHYA RVIGTRVYSD LSSICRAAVH AGVVRNHGGY VDMPVVKRK TYIASFQNGI FSESLQNPPG GKAFRVFAVV
Characteristics:	Human CRISPLD1 full-length ORF (NP_113649.1, 1 a.a. - 500 a.a.) recombinant protein with GST-tag at N-terminal.

Product Details

Purification: in vitro wheat germ expression system

Target Details

Target: CRISPLD1

Alternative Name: CRISPLD1 ([CRISPLD1 Products](#))

Background: Full Gene Name: cysteine-rich secretory protein LCCL domain containing 1
Synonyms: CRISP10,DKFZp762F133,LCRISP1

Gene ID: 83690

NCBI Accession: [NM_031461](#)

Application Details

Application Notes: Optimal working dilution should be determined by the investigator.

Comment: Preparation method: in vitro, wheat germ expression system
Product Quality tested by: 12.5% SDS-PAGE Stained with Coomassie Blue.

Restrictions: For Research Use only

Handling

Buffer: 50 mM Tris-HCl, 10 mM reduced Glutathione, pH =8.0 in the elution buffer.

Handling Advice: Aliquot to avoid repeated freezing and thawing.

Storage: -80 °C

Storage Comment: Best use within three months from the date of receipt of this protein.

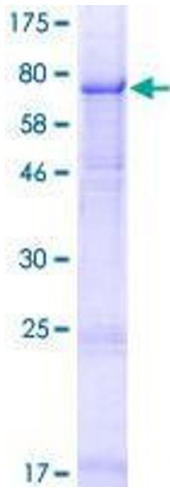


Image 1.