

Datasheet for ABIN1350371

## CDK12 Protein (AA 1281-1380) (GST tag)



[Go to Product page](#)

### 1 Image

#### Overview

Quantity:	10 µg
Target:	CDK12 (CRKRS)
Protein Characteristics:	AA 1281-1380
Origin:	Human
Source:	Wheat germ
Protein Type:	Recombinant
Purification tag / Conjugate:	This CDK12 protein is labelled with GST tag.
Application:	ELISA, Western Blotting (WB), Antibody Array (AA), Affinity Purification (AP)

#### Product Details

Purpose:	CRK7 (Human) Recombinant Protein (Q01)
Sequence:	LVEGDLSSAP QELNPAVTAA LLQLLSQPEA EPPGHLPEEH QALRPMMEYST RPRPNRTYGN TDGPETGFSA IDTDERNSSGP ALTESLVQTL VKNRTFSGSL
Characteristics:	Human CRK7 partial ORF ( NP_057591, 1281 a.a. - 1380 a.a.) recombinant protein with GST-tag at N-terminal.
Purification:	in vitro wheat germ expression system

#### Target Details

Target:	CDK12 (CRKRS)
Alternative Name:	CRKRS ( <a href="#">CRKRS Products</a> )

## Target Details

Background:	Full Gene Name: Cdc2-related kinase, arginine/serine-rich Synonyms: CRK7,CRKR,KIAA0904
Gene ID:	51755
NCBI Accession:	<a href="#">NM_016507</a>

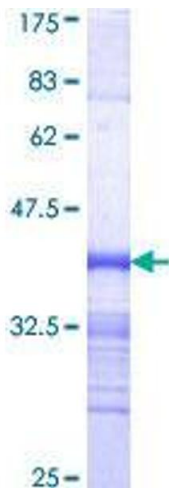
## Application Details

Application Notes:	Optimal working dilution should be determined by the investigator.
Comment:	Preparation method: in vitro, wheat germ expression system Product Quality tested by: 12.5% SDS-PAGE Stained with Coomassie Blue.
Restrictions:	For Research Use only

## Handling

Buffer:	50 mM Tris-HCl, 10 mM reduced Glutathione, pH =8.0 in the elution buffer.
Handling Advice:	Aliquot to avoid repeated freezing and thawing.
Storage:	-80 °C
Storage Comment:	Best use within three months from the date of receipt of this protein.

## Images



**Image 1.**