

Datasheet for ABIN1350388

LUC7-Like 3 Protein (LUC7L3) (AA 1-79) (GST tag)[Go to Product page](#)**1** Image

Overview

Quantity:	10 µg
Target:	LUC7-Like 3 (LUC7L3)
Protein Characteristics:	AA 1-79
Origin:	Human
Source:	Wheat germ
Protein Type:	Recombinant
Purification tag / Conjugate:	This LUC7-Like 3 protein is labelled with GST tag.
Application:	Western Blotting (WB), ELISA, Antibody Array (AA), Affinity Purification (AP)

Product Details

Purpose:	CROP (Human) Recombinant Protein (P01)
Sequence:	MISAAQLLDE LMGRDRNLAP DEKRSNVRWD HESVCKYYLC GFCPAELFTN TRSDLDVFGR GDNISDVSKF LEDDKWMEE
Characteristics:	Human CROP full-length ORF (AAH56409.1, 1 a.a. - 79 a.a.) recombinant protein with GST-tag at N-terminal.
Purification:	in vitro wheat germ expression system

Target Details

Target:	LUC7-Like 3 (LUC7L3)
Alternative Name:	CROP (LUC7L3 Products)

Target Details

Background:	Full Gene Name: cisplatin resistance-associated overexpressed protein Synonyms: LUC7A,OA48-18
Gene ID:	51747
Pathways:	Ribonucleoprotein Complex Subunit Organization

Application Details

Application Notes:	Optimal working dilution should be determined by the investigator.
Comment:	Preparation method: in vitro, wheat germ expression system Product Quality tested by: 12.5% SDS-PAGE Stained with Coomassie Blue.
Restrictions:	For Research Use only

Handling

Buffer:	50 mM Tris-HCl, 10 mM reduced Glutathione, pH =8.0 in the elution buffer.
Handling Advice:	Aliquot to avoid repeated freezing and thawing.
Storage:	-80 °C
Storage Comment:	Best use within three months from the date of receipt of this protein.

Images

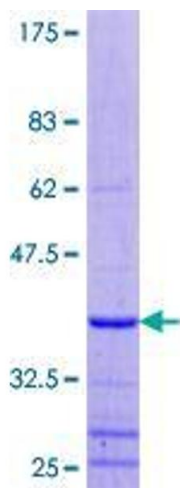


Image 1.