

Datasheet for ABIN135040
Rat anti-Mouse IgA Antibody



[Go to Product page](#)

1 Image

Overview

Quantity:	0.5 mg
Target:	IgA
Reactivity:	Mouse
Host:	Rat
Clonality:	Monoclonal
Application:	ELISA, Flow Cytometry (FACS)

Product Details

Immunogen:	Unknown
Clone:	11-44-2
Isotype:	IgG1
Specificity:	Reacts with the heavy chain of mouse IgA
Characteristics:	Rat Anti-Mouse IgA-UNLB
Purification:	Purified

Target Details

Target:	IgA
Abstract:	IgA Products
Target Type:	Antibody

Application Details

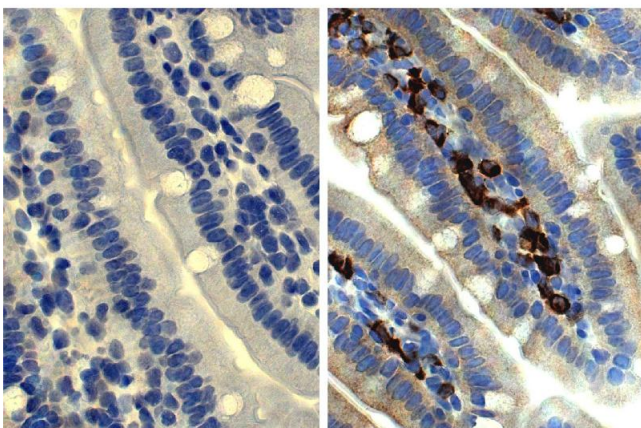
Application Notes:	<ul style="list-style-type: none">• Applications: FC - Quality tested , ELISA - Quality tested , FLISA - Quality tested IHC-FS - Reported in literature , IHC-PS , WB• Working Dilutions: Flow Cytometry FITC and BIOT conjugates 1 g/10⁶ cells PE and APC conjugates 0.2 g/10⁶ cells For flow cytometry, the suggested use of these reagents is in a final volume of 100 L ELISA AP conjugate 1:1,000 - 1:2,000 HRP conjugate 1:4,000 - 1:8,000 BIOT conjugate 1:5,000 - 1:20,000 FLISA FITC conjugate 1:200 - 1:400 PE and APC conjugates 1 g/mL
--------------------	---

Restrictions:	For Research Use only
---------------	-----------------------

Handling

Concentration:	0.5 mg/mL
Buffer:	0.5 mg of purified immunoglobulin in 1.0 mL of borate buffered saline, pH 8.2. No preservatives or amine-containing buffer salts added
Preservative:	Without preservative
Handling Advice:	Dilute only prior to immediate use Each reagent is stable for the period shown on the bottle label if stored as directed.
Storage:	4 °C
Storage Comment:	Store at 2-8°C

Images



Immunohistochemistry

Image 1. Paraffin embedded mouse small intestine section was stained with Rat Anti-Mouse IgA-UNLB followed by an HRP conjugated secondary antibody, DAB, and hematoxylin.