

Datasheet for ABIN1350402

**CRTAP Protein (AA 307-401) (GST tag)**[Go to Product page](#)**1** Image

## Overview

Quantity:	10 µg
Target:	CRTAP
Protein Characteristics:	AA 307-401
Origin:	Human
Source:	Wheat germ
Protein Type:	Recombinant
Purification tag / Conjugate:	This CRTAP protein is labelled with GST tag.
Application:	Western Blotting (WB), ELISA, Antibody Array (AA), Affinity Purification (AP)

## Product Details

Purpose:	CRTAP (Human) Recombinant Protein (Q01)
Sequence:	KLNDLKNAAP CAVSYLLFDQ NDKVMQQNLV YYQYHRDTWG LSDEHFQPRP EAVQFFNVTT LQKELYDFAK ENIMDDDEGE VVEYVDDLLE LEETS
Characteristics:	Human CRTAP partial ORF ( NP_006362, 307 a.a. - 401 a.a.) recombinant protein with GST-tag at N-terminal.
Purification:	in vitro wheat germ expression system

## Target Details

Target:	CRTAP
Alternative Name:	CRTAP ( <a href="#">CRTAP Products</a> )

Target Details

Background: Full Gene Name: cartilage associated protein  
Synonyms: CASP,LEPREL3

Gene ID: 10491

NCBI Accession: [NM\\_006371](#)

Application Details

Application Notes: Optimal working dilution should be determined by the investigator.

Comment: Preparation method: in vitro, wheat germ expression system  
Product Quality tested by: 12.5% SDS-PAGE Stained with Coomassie Blue.

Restrictions: For Research Use only

Handling

Buffer: 50 mM Tris-HCl, 10 mM reduced Glutathione, pH =8.0 in the elution buffer.

Handling Advice: Aliquot to avoid repeated freezing and thawing.

Storage: -80 °C

Storage Comment: Best use within three months from the date of receipt of this protein.

Images

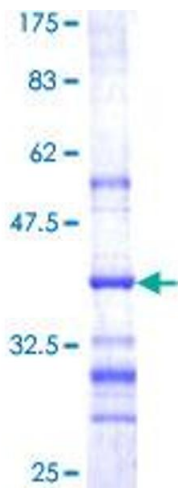


Image 1.