



[Go to Product page](#)

Datasheet for ABIN1350409

CRTC3 Protein (AA 176-274) (GST tag)

1 Image

Overview

Quantity:	10 µg
Target:	CRTC3
Protein Characteristics:	AA 176-274
Origin:	Human
Source:	Wheat germ
Protein Type:	Recombinant
Purification tag / Conjugate:	This CRTC3 protein is labelled with GST tag.
Application:	Western Blotting (WB), ELISA, Antibody Array (AA), Affinity Purification (AP)

Product Details

Purpose:	CRTC3 (Human) Recombinant Protein (Q01)
Sequence:	QDPYGGGGQS AWPAPYMGFC DGENNGHGEV ASFPGPLKEE NLLNVPKPLP KQLWETKEIQ SLSGRPRSCD VGGGNAFPHN GQNLGLSPFL GTLNTGGSL
Characteristics:	Human CRTC3 partial ORF (NP_073606.2, 176 a.a. - 274 a.a.) recombinant protein with GST-tag at N-terminal.
Purification:	in vitro wheat germ expression system

Target Details

Target:	CRTC3
Alternative Name:	CRTC3 (CRTC3 Products)

Target Details

Background:	Full Gene Name: CREB regulated transcription coactivator 3 Synonyms: FLJ21868,TORC3
Gene ID:	64784
NCBI Accession:	NM_022769
Pathways:	SARS-CoV-2 Protein Interactome , The Global Phosphorylation Landscape of SARS-CoV-2 Infection

Application Details

Application Notes:	Optimal working dilution should be determined by the investigator.
Comment:	Preparation method: in vitro, wheat germ expression system Product Quality tested by: 12.5% SDS-PAGE Stained with Coomassie Blue.
Restrictions:	For Research Use only

Handling

Buffer:	50 mM Tris-HCl, 10 mM reduced Glutathione, pH =8.0 in the elution buffer.
Handling Advice:	Aliquot to avoid repeated freezing and thawing.
Storage:	-80 °C
Storage Comment:	Best use within three months from the date of receipt of this protein.

Images

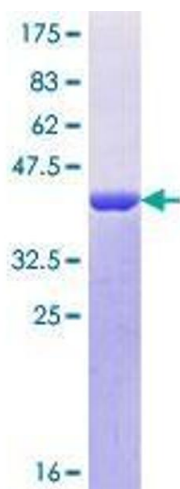


Image 1.