



[Go to Product page](#)

Datasheet for ABIN1350411

## CRX Protein (AA 1-299) (GST tag)

1 Image

1 Publication

### Overview

Quantity:	10 µg
Target:	CRX
Protein Characteristics:	AA 1-299
Origin:	Human
Source:	Wheat germ
Protein Type:	Recombinant
Purification tag / Conjugate:	This CRX protein is labelled with GST tag.
Application:	ELISA, Western Blotting (WB), Antibody Array (AA), Affinity Purification (AP)

### Product Details

Purpose:	CRX (Human) Recombinant Protein (P01)
Sequence:	MMAYMNPAPH YSVNALALSG PSVDLMHQAV PYPSAPRKQR RERTTFTRSQ LEELEALFAK TQYPDVYARE EVALKINLPE SRVQVWFKNR RAKCRQQRQQ QKQQQPPGG QAKARPAKRK AGTSPRPSTD VCPDPLGISD SYSPPLPGPS GSPTTAVATV SIWSPASESP LPEAQRAGLV ASGSLTSAP YAMTYAPASA FCSSPSAYGS PSSYFSGLDL YLSPMVPQLG GPALSPLSGP SVGPSLAQSP TSLSGQSYGA YSPVDSLEFK DPTGTWKFTY NPMDPLDYKD QSAWKFKIL
Characteristics:	Human CRX full-length ORF ( AAH16664, 1 a.a. - 299 a.a.) recombinant protein with GST-tag at N-terminal.
Purification:	in vitro wheat germ expression system

## Target Details

---

Target:	CRX
Alternative Name:	CRX ( <a href="#">CRX Products</a> )
Background:	Full Gene Name: cone-rod homeobox Synonyms: CORD2,CRD,LCA7,OTX3
Gene ID:	1406

## Application Details

---

Application Notes:	Optimal working dilution should be determined by the investigator.
Comment:	Preparation method: in vitro, wheat germ expression system Product Quality tested by: 12.5% SDS-PAGE Stained with Coomassie Blue.
Restrictions:	For Research Use only

## Handling

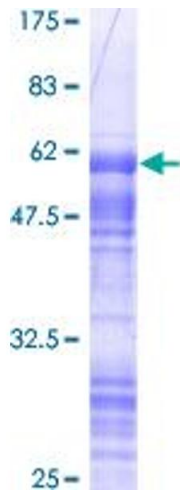
---

Buffer:	50 mM Tris-HCl, 10 mM reduced Glutathione, pH =8.0 in the elution buffer.
Handling Advice:	Aliquot to avoid repeated freezing and thawing.
Storage:	-80 °C
Storage Comment:	Best use within three months from the date of receipt of this protein.

## Publications

---

Product cited in:	Santagata, Maire, Idbaih, Geffers, Correll, Holton, Quackenbush, Ligon: "CRX is a diagnostic marker of retinal and pineal lineage tumors." in: <b>PLoS ONE</b> , Vol. 4, Issue 11, pp. e7932, (2009) ( <a href="#">PubMed</a> ).
-------------------	--



**Image 1.**