



[Go to Product page](#)

Datasheet for ABIN1350417

CRY1 Protein (AA 1-586) (GST tag)

1 Image

1 Publication

Overview

| | |
|-------------------------------|---|
| Quantity: | 10 µg |
| Target: | CRY1 |
| Protein Characteristics: | AA 1-586 |
| Origin: | Human |
| Source: | Wheat germ |
| Protein Type: | Recombinant |
| Purification tag / Conjugate: | This CRY1 protein is labelled with GST tag. |
| Application: | Western Blotting (WB), ELISA, Antibody Array (AA), Affinity Purification (AP) |

Product Details

| | |
|------------------|---|
| Purpose: | CRY1 (Human) Recombinant Protein (P01) |
| Sequence: | <p>MGVNAVHWFR KGLRLHDNPA LKECIQGADT IRCVYILDPW FAGSSNVGIN RWRFLQCLE</p> <p>DLNANLRKLN SRLFVIRGQP ADVFPRLFKE WNITKLSIEY DSEPFKGERD AAIKKLATEA</p> <p>GVEVIVRISH TLYDLDKIIE LNGGQPPLTY KRFQTLISKM EPLEIPVETI TSEVIEKCTT PLSDDHDEKY</p> <p>GVPSLEELGF DTDGLSSAVW PGGETEALTR LERHLERKAW VANFERPRMN ANLLASPTG</p> <p>LSPYLRFGL SCRLFYFKLT DLYKKVKKNS SPPLSLYGQL LWREFFYTAA TNNPRFDKME</p> <p>GNPICVQIPW DKNPEALAKW AEGRTGFPWI DAIMTQLRQE GWIHHLARHA VACFLTRGDL</p> <p>WISWEEGMKV FEELLDADW SINAGSWMWL SCSSFFQOFF HCYCVPVGFGR RTDPNGDYIR</p> <p>RYLPVLRGFP AKYIYDPWNA PEGIQKVAKC LIGVNYPKPM VNHAESRLN IERMKQIYQQ</p> <p>LSRYRGLGLL ASVPSNPNGN GGFMGYSAEN IPGCSSSGSC SQGSGILHYA HGDSQQTHLL</p> <p>KQGRSSMTG LSGGKRPSQE EDTQSIGPKV QRQSTN</p> |
| Characteristics: | Human CRY1 full-length ORF (AAH30519, 1 a.a. - 586 a.a.) recombinant protein with GST-tag at |

Product Details

N-terminal.

Purification: in vitro wheat germ expression system

Target Details

Target: CRY1

Alternative Name: CRY1 ([CRY1 Products](#))

Background: Full Gene Name: cryptochrome 1 (photolyase-like)
Synonyms: PHLL1

Gene ID: 1407

Pathways: [Response to Water Deprivation](#), [Proton Transport](#)

Application Details

Application Notes: Optimal working dilution should be determined by the investigator.

Comment: Preparation method: in vitro, wheat germ expression system
Product Quality tested by: 12.5% SDS-PAGE Stained with Coomassie Blue.

Restrictions: For Research Use only

Handling

Buffer: 50 mM Tris-HCl, 10 mM reduced Glutathione, pH =8.0 in the elution buffer.

Handling Advice: Aliquot to avoid repeated freezing and thawing.

Storage: -80 °C

Storage Comment: Best use within three months from the date of receipt of this protein.

Publications

Product cited in: Santagata, Maire, Idhah, Geffers, Correll, Holton, Quackenbush, Ligon: "CRX is a diagnostic marker of retinal and pineal lineage tumors." in: **PLoS ONE**, Vol. 4, Issue 11, pp. e7932, (2009) ([PubMed](#)).

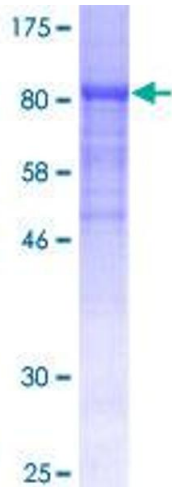


Image 1.