



[Go to Product page](#)

Datasheet for ABIN1350419

## CRY2 Protein (AA 1-593) (GST tag)

### 1 Image

#### Overview

Quantity:	25 µg
Target:	CRY2
Protein Characteristics:	AA 1-593
Origin:	Human
Source:	Wheat germ
Protein Type:	Recombinant
Purification tag / Conjugate:	This CRY2 protein is labelled with GST tag.
Application:	ELISA, Western Blotting (WB), Antibody Array (AA), Affinity Purification (AP)

#### Product Details

Purpose:	CRY2 (Human) Recombinant Protein (P01)
Sequence:	MAATVATAAA VAPAPAGTD SASSVHWFRK GLRLHDNPAL LAAVRGARCV RCVYILDPAWF AASSVGINR WRFLQSLD LDTSLRKLNS RLFVVRGQPA DVFPRLFKEW GVTRLTFEYD SEPFGERDA AIMKMAKEAG VEVVTENSHT LYDLDRIEL NGQKPPLYTK RFQAIISRME LPKKPVGLVT SQQMESCRAE IQENHDETYG VPSLEELGFP TEGLGPAVWQ GGETEALARL DKHLERKAWV ANYERPRMNA NSLLASPTGL SPYLRFGCLS CRLFYRLWD LYKKVKRNST PPLSLFGQLL WREFFYTAAT NNPRFDRMEG NPICIQIPWD RNPEALAKWA EGKTGFPWID AIMTQLRQEG WIHHLARHAV ACFLTRGDLW VSWESGVRVF DELLLDADFS VNAGSWMWLS CSAFFQQFFH CYCPVGFGRR TDPSGDYIRR YLPKLKAFPS RYIYEPWNAP ESIQKAAKCI IGVDYPRPIV NHAETSRINI ERMKQIYQQL SRYRGLCLLA SVPSCVEDLS HPVAEPSSSQ AGSMSSAGPR PLPSGPASPK RKLEAAEPP GEELSKRARV AELPTPELPS KDA
Characteristics:	Human CRY2 full-length ORF ( NP_066940.1, 1 a.a. - 593 a.a.) recombinant protein with GST-tag

## Product Details

---

at N-terminal.

Purification: in vitro wheat germ expression system

## Target Details

---

Target: CRY2

Alternative Name: CRY2 ([CRY2 Products](#))

Background: Full Gene Name: cryptochrome 2 (photolyase-like)  
Synonyms: FLJ10332,HCRY2,KIAA0658,PHLL2

Gene ID: 1408

NCBI Accession: [NM\\_021117](#)

Pathways: [Response to Water Deprivation](#), [Protein targeting to Nucleus](#)

## Application Details

---

Application Notes: Optimal working dilution should be determined by the investigator.

Comment: Preparation method: in vitro, wheat germ expression system  
Product Quality tested by: 12.5% SDS-PAGE Stained with Coomassie Blue.

Restrictions: For Research Use only

## Handling

---

Buffer: 50 mM Tris-HCl, 10 mM reduced Glutathione, pH =8.0 in the elution buffer.

Handling Advice: Aliquot to avoid repeated freezing and thawing.

Storage: -80 °C

Storage Comment: Best use within three months from the date of receipt of this protein.

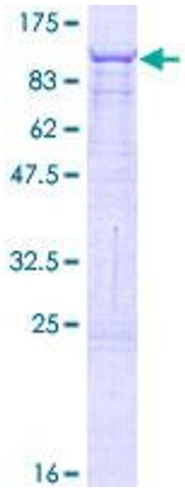


Image 1.