



[Go to Product page](#)

Datasheet for ABIN1350492

M-CSF/CSF1 Protein (AA 33-132) (GST tag)

1 Image

Overview

| | |
|-------------------------------|---|
| Quantity: | 10 µg |
| Target: | M-CSF/CSF1 (CSF1) |
| Protein Characteristics: | AA 33-132 |
| Origin: | Human |
| Source: | Wheat germ |
| Protein Type: | Recombinant |
| Purification tag / Conjugate: | This M-CSF/CSF1 protein is labelled with GST tag. |
| Application: | Western Blotting (WB), ELISA, Antibody Array (AA), Affinity Purification (AP) |

Product Details

| | |
|------------------|--|
| Purpose: | CSF1 (Human) Recombinant Protein (Q01) |
| Sequence: | EEVSEYCSHM IGSGHLQSLQ RLIDSQMETS CQITFEFVDQ EQLKDPVCYL KKAFLLVQDI MEDTMRFRDN TPNAIAIVQL QELSLRLKSC FTKDYEEHDK |
| Characteristics: | Human CSF1 partial ORF (AAH21117, 33 a.a. - 132 a.a.) recombinant protein with GST-tag at N-terminal. |
| Purification: | in vitro wheat germ expression system |

Target Details

| | |
|-------------------|--|
| Target: | M-CSF/CSF1 (CSF1) |
| Alternative Name: | CSF1 (CSF1 Products) |

Target Details

| | |
|-------------|---|
| Background: | Full Gene Name: colony stimulating factor 1 (macrophage) Synonyms: MCSF,MGC31930 |
| Gene ID: | 1435 |
| Pathways: | RTK Signaling |

Application Details

| | |
|--------------------|--|
| Application Notes: | Optimal working dilution should be determined by the investigator. |
| Comment: | Preparation method: in vitro, wheat germ expression system Product Quality tested by: 12.5% SDS-PAGE Stained with Coomassie Blue. |
| Restrictions: | For Research Use only |

Handling

| | |
|------------------|---|
| Buffer: | 50 mM Tris-HCl, 10 mM reduced Glutathione, pH =8.0 in the elution buffer. |
| Handling Advice: | Aliquot to avoid repeated freezing and thawing. |
| Storage: | -80 °C |
| Storage Comment: | Best use within three months from the date of receipt of this protein. |

Images

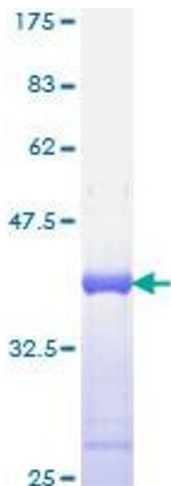


Image 1.