

Datasheet for ABIN1350523

Casein alpha S1 Protein (CSN1S1) (AA 1-185) (GST tag)



[Go to Product page](#)

1 Image

Overview

Quantity:	10 µg
Target:	Casein alpha S1 (CSN1S1)
Protein Characteristics:	AA 1-185
Origin:	Human
Source:	Wheat germ
Protein Type:	Recombinant
Purification tag / Conjugate:	This Casein alpha S1 protein is labelled with GST tag.
Application:	Western Blotting (WB), ELISA, Antibody Array (AA), Affinity Purification (AP)

Product Details

Purpose:	CSN1S1 (Human) Recombinant Protein (P01)
Sequence:	MRLLLILTCLV AVALARPKLP LRYPERLQNP SESSEPIPLE SREEYMNGMN RQRNILREKQ TDEIKDTRNE STQNCVVAEP EKMESSISSS SEEMSLSKCA EQFCRLNEYN QLQLQAAHAQ EQIRRMNENS HVQVPFQQLN QLAAYPYAVW YYPQIMQYVP FPPFSDISNP TAHENYEKNN VMLQW
Characteristics:	Human CSN1S1 full-length ORF (NP_001881.1, 1 a.a. - 185 a.a.) recombinant protein with GST-tag at N-terminal.
Purification:	in vitro wheat germ expression system

Target Details

Target:	Casein alpha S1 (CSN1S1)
---------	--------------------------

Target Details

Alternative Name:	CSN1S1 (CSN1S1 Products)
Background:	Full Gene Name: casein alpha s1 Synonyms: CASA,CSN1,MGC149368
Gene ID:	1446
NCBI Accession:	NM_001890

Application Details

Application Notes:	Optimal working dilution should be determined by the investigator.
Comment:	Preparation method: in vitro, wheat germ expression system Product Quality tested by: 12.5% SDS-PAGE Stained with Coomassie Blue.
Restrictions:	For Research Use only

Handling

Buffer:	50 mM Tris-HCl, 10 mM reduced Glutathione, pH =8.0 in the elution buffer.
Handling Advice:	Aliquot to avoid repeated freezing and thawing.
Storage:	-80 °C
Storage Comment:	Best use within three months from the date of receipt of this protein.

Images

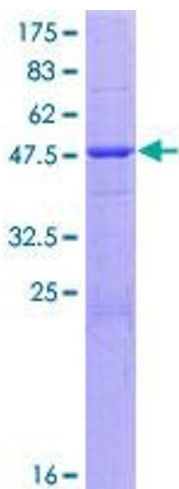


Image 1.