



[Go to Product page](#)

Datasheet for ABIN1350546

CSNK1G3 Protein (AA 1-423) (GST tag)

1 Image

Overview

Quantity:	25 µg
Target:	CSNK1G3
Protein Characteristics:	AA 1-423
Origin:	Human
Source:	Wheat germ
Protein Type:	Recombinant
Purification tag / Conjugate:	This CSNK1G3 protein is labelled with GST tag.
Application:	ELISA, Western Blotting (WB), Antibody Array (AA), Affinity Purification (AP)

Product Details

Purpose:	CSNK1G3 (Human) Recombinant Protein (P01)
Sequence:	MENKKKDKDK SDDRMARPSG RSGHNTRGTG SSSSGVLMVG PNFVRVGGKIG CGNFGELRLG KNLYTNEYVA IKLEPMKSRA PQLHLEYRFY EQLGSGDGIP QVYYFGPCGK YNAMVLELLG PSLEDLFDLC DRTFSLKTVL MIAIQLISM EYVHKNLIY RDVKPENFLI GRPGNKTQQV IHIIDFGLAK EYIDPETKKH IPYREHKSLT GTARYMSINT HLGKEQSRRD DLEALGHMFM YFLRGSLPWQ GLKADTLKER YQKIGDTKRA TPIEVLCEMF PEMATYLRVY RRLDFFEKPD YDYLRKLFTD LFDRKGYMFD YEYDWIGKQL PTPVGAVQQD PALSSNREAH QHRDKMQQSK NQVVSSTNGE LNTDDPTAGR SNAPITAPTE VEVMDETNCQ KVLNMWCCCF FKRRKRKTIQ RHK
Characteristics:	Human CSNK1G3 full-length ORF (AAH47567.1, 1 a.a. - 423 a.a.) recombinant protein with GST-tag at N-terminal.
Purification:	in vitro wheat germ expression system

Target Details

Target:	CSNK1G3
Alternative Name:	CSNK1G3 (CSNK1G3 Products)
Background:	Full Gene Name: casein kinase 1, gamma 3 Synonyms:
Gene ID:	1456
Pathways:	Hedgehog Signaling

Application Details

Application Notes:	Optimal working dilution should be determined by the investigator.
Comment:	Preparation method: in vitro, wheat germ expression system Product Quality tested by: 12.5% SDS-PAGE Stained with Coomassie Blue.
Restrictions:	For Research Use only

Handling

Buffer:	50 mM Tris-HCl, 10 mM reduced Glutathione, pH =8.0 in the elution buffer.
Handling Advice:	Aliquot to avoid repeated freezing and thawing.
Storage:	-80 °C
Storage Comment:	Best use within three months from the date of receipt of this protein.

Images

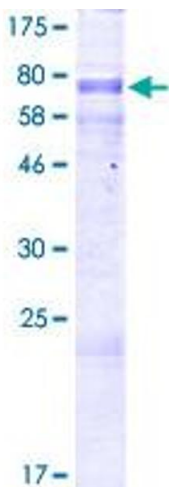


Image 1.