



[Go to Product page](#)

Datasheet for ABIN1350559

## CSPG5 Protein (AA 445-539) (GST tag)

### 1 Image

#### Overview

Quantity:	10 µg
Target:	CSPG5
Protein Characteristics:	AA 445-539
Origin:	Human
Source:	Wheat germ
Protein Type:	Recombinant
Purification tag / Conjugate:	This CSPG5 protein is labelled with GST tag.
Application:	Western Blotting (WB), ELISA, Antibody Array (AA), Affinity Purification (AP)

#### Product Details

Purpose:	CSPG5 (Human) Recombinant Protein (Q01)
Sequence:	KKLYLLKTEN TKLRRTNKFR TPSELHNDNF SLSTIAEGSH PNDDPSAPHK IQEVLKSKLK EEESFNIQNS MSPKLEGGKG DQADLDVNCL QNNLT
Characteristics:	Human CSPG5 partial ORF ( NP_006565, 445 a.a. - 539 a.a.) recombinant protein with GST-tag at N-terminal.
Purification:	in vitro wheat germ expression system

#### Target Details

Target:	CSPG5
Alternative Name:	CSPG5 ( <a href="#">CSPG5 Products</a> )

## Target Details

Background:	Full Gene Name: chondroitin sulfate proteoglycan 5 (neuroglycan C) Synonyms: MGC44034,NGC
Gene ID:	10675
NCBI Accession:	<a href="#">NM_006574</a>
Pathways:	<a href="#">Glycosaminoglycan Metabolic Process</a>

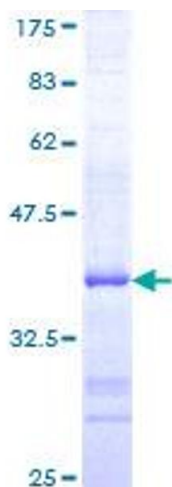
## Application Details

Application Notes:	Optimal working dilution should be determined by the investigator.
Comment:	Preparation method: in vitro, wheat germ expression system Product Quality tested by: 12.5% SDS-PAGE Stained with Coomassie Blue.
Restrictions:	For Research Use only

## Handling

Buffer:	50 mM Tris-HCl, 10 mM reduced Glutathione, pH =8.0 in the elution buffer.
Handling Advice:	Aliquot to avoid repeated freezing and thawing.
Storage:	-80 °C
Storage Comment:	Best use within three months from the date of receipt of this protein.

## Images



**Image 1.**