

Datasheet for ABIN135057  
**anti-COL6 antibody (Biotin)**



[Go to Product page](#)

1 Image

Overview

Quantity:	0.2 mg
Target:	COL6
Reactivity:	Human
Host:	Goat
Clonality:	Polyclonal
Conjugate:	This COL6 antibody is conjugated to Biotin
Application:	ELISA

Product Details

Isotype:	IgG
Specificity:	Reacts with conformational determinants on type VI collagen Referenced species reactivities include - Human 1-3,5,6,9-11,13,14,16-19 Canine 20 Mouse 12,15 Cynomolgus 20 Rat 8,20 Porcine 4 Bovine 17 Rabbit 7
Cross-Reactivity (Details):	Exhibits < 10 % cross reactivity with collagen type II, III, IV, V and VI. The antibody has not been tested for reactivity with other ECM proteins (e.g., laminin, fibronectin).
Characteristics:	Goat Anti-Type VI Collagen-BIOT
Purification:	<b>Purification Method:</b> Affinity chromatography on type VI collagen covalently linked to agarose.

Target Details

Target:	COL6
Alternative Name:	Type VI Collagen ( <a href="#">COL6 Products</a> )

## Application Details

Application Notes:

- **Applications:** Quality tested applications include - ELISA ,
- Other referenced applications include - IHC-PS , IHC-FS , ICC , EM , WB
- **Working Dilutions:** ELISA BIOT conjugate 1:1,000 - 1:4,000

Sample Volume: 0,5 mL

Restrictions: For Research Use only

## Handling

Concentration: 0.4 mg/mL

Buffer: 0.2 mg in 0.5 mL of PBS/Sodium azide

Preservative: Sodium azide

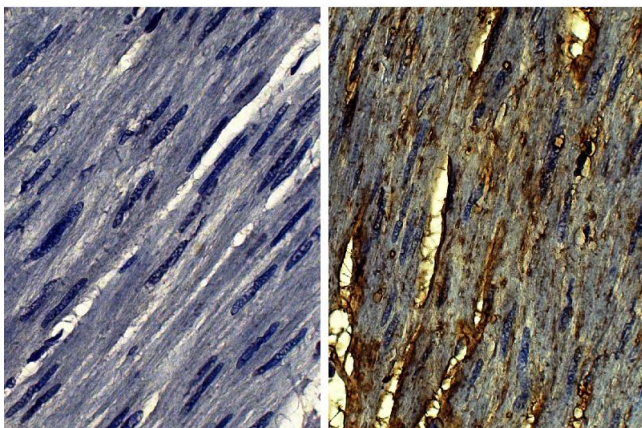
Precaution of Use: This product contains Sodium azide: a POISONOUS AND HAZARDOUS SUBSTANCE which should be handled by trained staff only.

Handling Advice: **Protect conjugated products from light.**  
Each reagent is stable for the period shown on the bottle label if stored as directed.

Storage: 4 °C

Storage Comment: Store at 2-8°C

## Images



### Immunohistochemistry

**Image 1.** Paraffin embedded human gastric cancer tissue was stained with Goat IgG-UNLB isotype control, DAB, and hematoxylin.