



[Go to Product page](#)

Datasheet for ABIN1350607

## CSTF1 Protein (AA 332-431) (GST tag)

### 1 Image

#### Overview

Quantity:	10 µg
Target:	CSTF1
Protein Characteristics:	AA 332-431
Origin:	Human
Source:	Wheat germ
Protein Type:	Recombinant
Purification tag / Conjugate:	This CSTF1 protein is labelled with GST tag.
Application:	ELISA, Western Blotting (WB), Antibody Array (AA), Affinity Purification (AP)

#### Product Details

Purpose:	CSTF1 (Human) Recombinant Protein (Q01)
Sequence:	LWEISTGRTL VRYTGAGLSG RQVHRTQAVF NHTEDYVLLP DERTISLCCW DSRTAERRNL LSLGHNNIVR CIVHSPTNPG FMTCSDDFRA RFWYRRSTTD
Characteristics:	Human CSTF1 partial ORF ( NP_001315.1, 332 a.a. - 431 a.a.) recombinant protein with GST-tag at N-terminal.
Purification:	in vitro wheat germ expression system

#### Target Details

Target:	CSTF1
Alternative Name:	CSTF1 ( <a href="#">CSTF1 Products</a> )

## Target Details

Background:	Full Gene Name: cleavage stimulation factor, 3' pre-RNA, subunit 1, 50 kDa Synonyms: CstF-50,CstFp50
Gene ID:	1477
NCBI Accession:	<a href="#">NM_001324</a>

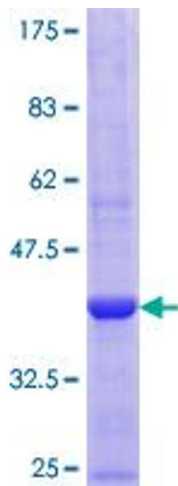
## Application Details

Application Notes:	Optimal working dilution should be determined by the investigator.
Comment:	Preparation method: in vitro, wheat germ expression system Product Quality tested by: 12.5% SDS-PAGE Stained with Coomassie Blue.
Restrictions:	For Research Use only

## Handling

Buffer:	50 mM Tris-HCl, 10 mM reduced Glutathione, pH =8.0 in the elution buffer.
Handling Advice:	Aliquot to avoid repeated freezing and thawing.
Storage:	-80 °C
Storage Comment:	Best use within three months from the date of receipt of this protein.

## Images



**Image 1.**