



[Go to Product page](#)

Datasheet for ABIN135063
anti-Fibrillin antibody (FITC)

1 Image

Overview

| | |
|--------------|---|
| Quantity: | 0.2 mg |
| Target: | Fibrillin (FBL) |
| Reactivity: | Cow, Human |
| Host: | Mouse |
| Clonality: | Monoclonal |
| Conjugate: | This Fibrillin antibody is conjugated to FITC |
| Application: | Immunohistochemistry (IHC), Immunocytochemistry (ICC) |

Product Details

| | |
|------------------|---|
| Immunogen: | Microfibrils from zonular apparatus of bovine eye Ig |
| Clone: | 11C1-3 |
| Isotype: | IgG1 |
| Characteristics: | The antibody detects: Human and bovine fibrillin (Mr 350 kDa), other species not tested In immunohistochemical staining of paraformaldehyde-fixed human skin, mAb 11C1.3 labels the elastic framework and more specifically the oxytalantic network close to the epidermis. The antibody also exhibits discrete staining of normal fibroblasts in culture and of extracellular (elastin) fibrils in a variety of tissues. There is an aberrant expression of fibrillin in Marfan syndrome. |

Target Details

| | |
|---------|-----------------|
| Target: | Fibrillin (FBL) |
|---------|-----------------|

Target Details

Alternative Name: Fibrillin ([FBL Products](#))

Background: The fibrillins are extracellular matrix glycoproteins which occur as a major component of a subset of connective tissue microfibrils. These microfibrils have a beaded appearance and a cross-sectional diameter of 10-12 nm. In elastic tissues, these structures are thought to provide the scaffold onto which elastin is assembled to form elastic fibers, although their function in non-elastic tissues is unclear.

Application Details

Application Notes: Working Dilution:
Immunohistochemistry: 1:50-1:100 (30-60 min at RT)
Representative data are included in this product insert.

Each laboratory should determine an optimum working titer for use in its particular application. Other applications have not been tested but use in such assays should not necessarily be excluded.

Sample Volume: 1 mL

Restrictions: For Research Use only

Handling

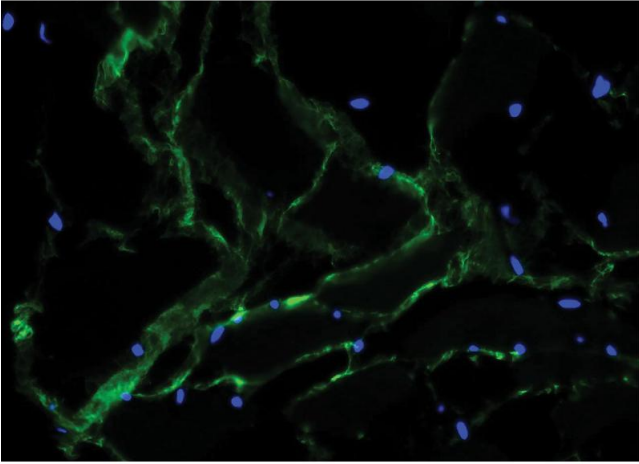
Buffer: Product is supplied as 0.2 mg in 1.0 mL of PBS / NaN₃.

Preservative: Sodium azide

Precaution of Use: **WARNING:** Reagents contain sodium azide. Sodium azide is very toxic if ingested or inhaled. Avoid contact with skin, eyes, or clothing. Wear eye or face protection when handling. If skin or eye contact occurs, wash with copious amounts of water. If ingested or inhaled, contact a physician immediately. Sodium azide yields toxic hydrazoic acid under acidic conditions. Dilute azide-containing compounds in running water before discarding to avoid accumulation of potentially explosive deposits in lead or copper plumbing.

Handling Advice: **Protect conjugated products from light.**
Each reagent is stable for the period shown on the bottle label if stored as directed.

Storage: 4 °C



Immunofluorescence

Image 1. Frozen bovine muscle tissue section was stained with Mouse Anti-Fibrillin-UNLB and DAPI.