



[Go to Product page](#)

Datasheet for ABIN1350647

## CTGF Protein (AA 31-251) (GST tag)

### 1 Image

#### Overview

Quantity:	10 µg
Target:	CTGF
Protein Characteristics:	AA 31-251
Origin:	Human
Source:	Wheat germ
Protein Type:	Recombinant
Purification tag / Conjugate:	This CTGF protein is labelled with GST tag.
Application:	Western Blotting (WB), ELISA, Antibody Array (AA), Affinity Purification (AP)

#### Product Details

Purpose:	CTGF (Human) Recombinant Protein (P01)
Sequence:	GPCRCPEPA PRCPAGVSLV LDGCGCCRVK AKQLGELCTE RDCDPHKGL FCDGSPANR KIGVCTAKDG APCIFGGTVY RSGESFQSSC KYQCTCLDGA VGCMPLCSMD VRLPSPDCPF PRRVKLPKGC CEEWVCDEPK DQTVVGPALA AYRLEDTFGP DPTMIRANCL VQTTEWSACS KTCGMGISTR VTNDNASRCL EKQSRLCMVR PCEADLEENI K
Characteristics:	Human CTGF full-length ORF (NP_001892.1, 31 a.a. - 251 a.a.) recombinant protein with GST-tag at N-terminal.
Purification:	in vitro wheat germ expression system

#### Target Details

Target:	CTGF
---------	------

## Target Details

Alternative Name:	CTGF ( <a href="#">CTGF Products</a> )
Background:	Full Gene Name: connective tissue growth factor Synonyms: CCN2,HCS24,IGFBP8,MGC102839,NOV2
Gene ID:	1490
NCBI Accession:	<a href="#">NM_001901</a>
Pathways:	<a href="#">Regulation of Lipid Metabolism by PPARalpha</a> , <a href="#">Positive Regulation of Endopeptidase Activity</a> , <a href="#">Growth Factor Binding</a>

## Application Details

Application Notes:	Optimal working dilution should be determined by the investigator.
Comment:	Preparation method: in vitro, wheat germ expression system Product Quality tested by: 12.5% SDS-PAGE Stained with Coomassie Blue
Restrictions:	For Research Use only

## Handling

Buffer:	50 mM Tris-HCl, 10 mM reduced Glutathione, pH =8.0 in the elution buffer.
Handling Advice:	Aliquot to avoid repeated freezing and thawing.
Storage:	-80 °C
Storage Comment:	Best use within three months from the date of receipt of this protein.

## Images

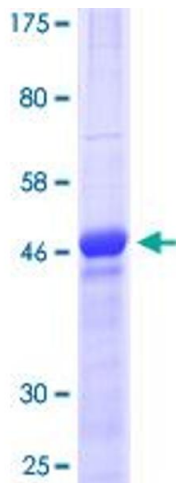


Image 1.