



[Go to Product page](#)

Datasheet for ABIN1350694

Elastase 4 Protein (AA 1-268) (GST tag)

1 Image

Overview

Quantity:	10 µg
Target:	Elastase 4 (CTRC)
Protein Characteristics:	AA 1-268
Origin:	Human
Source:	Wheat germ
Protein Type:	Recombinant
Purification tag / Conjugate:	This Elastase 4 protein is labelled with GST tag.
Application:	Western Blotting (WB), ELISA, Antibody Array (AA), Affinity Purification (AP)

Product Details

Purpose:	CTRC (Human) Recombinant Protein (P01)
Sequence:	MLGITVLAAL LACASSCGVP SFPPNLSARV VGGEDARPHS WPWQISLQYL KNDTWRHTCG GTLIASNFVL TAAHCISNTR TYRVAVGKNN LEVEDEEGL FVGVDTIHVH KRWNALLRN DIALIKLAEH VELSDTIQVA CLPEKDSLPL KDYPYVTGW GRLWTNGPIA DKLQQGLQPV VDHATCSRID WWGFRVKKTM VCAGGDGVIS ACNGDSSGGL NCQLENGSWE VFGIVSFGSR RGCNTRKKPV VYTRVSAYID WINEKMQL
Characteristics:	Human CTCRC full-length ORF (NP_009203.2, 1 a.a. - 268 a.a.) recombinant protein with GST-tag at N-terminal.
Purification:	in vitro wheat germ expression system

Target Details

Target:	Elastase 4 (CTRC)
Alternative Name:	CTRC (CTRC Products)
Background:	Full Gene Name: chymotrypsin C (caldecrin) Synonyms: CLCR,ELA4
Gene ID:	11330
NCBI Accession:	NM_007272

Application Details

Application Notes:	Optimal working dilution should be determined by the investigator.
Comment:	Preparation method: in vitro, wheat germ expression system Product Quality tested by: 12.5% SDS-PAGE Stained with Coomassie Blue.
Restrictions:	For Research Use only

Handling

Buffer:	50 mM Tris-HCl, 10 mM reduced Glutathione, pH =8.0 in the elution buffer.
Handling Advice:	Aliquot to avoid repeated freezing and thawing.
Storage:	-80 °C
Storage Comment:	Best use within three months from the date of receipt of this protein.

Images

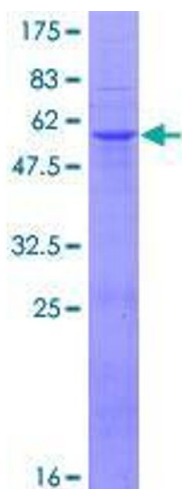


Image 1.