

[Go to Product page](#)

Datasheet for ABIN1350696

Elastase 4 Protein (AA 170-268) (GST tag)**1** Image

Overview

Quantity:	10 µg
Target:	Elastase 4 (CTRC)
Protein Characteristics:	AA 170-268
Origin:	Human
Source:	Wheat germ
Protein Type:	Recombinant
Purification tag / Conjugate:	This Elastase 4 protein is labelled with GST tag.
Application:	Western Blotting (WB), ELISA, Antibody Array (AA), Affinity Purification (AP)

Product Details

Purpose:	CTRC (Human) Recombinant Protein (Q01)
Sequence:	ADKLQQLQP VVDHATCSRI DWWGFRVKKT MVCAGGDGVI SACNGDSGGP LNCQLENGSW EVFGIVSFGS RRGCNTRKKP VVYTRVSAYI DWINEKMQL
Characteristics:	Human CTRC partial ORF (NP_009203.2, 170 a.a. - 268 a.a.) recombinant protein with GST-tag at N-terminal.
Purification:	in vitro wheat germ expression system

Target Details

Target:	Elastase 4 (CTRC)
Alternative Name:	CTRC (CTRC Products)

Target Details

Background: Full Gene Name: chymotrypsin C (caldecrin)
Synonyms: CLCR,ELA4

Gene ID: 11330

NCBI Accession: [NM_007272](#)

Application Details

Application Notes: Optimal working dilution should be determined by the investigator.

Comment: Preparation method: in vitro, wheat germ expression system
Product Quality tested by: 12.5% SDS-PAGE Stained with Coomassie Blue.

Restrictions: For Research Use only

Handling

Buffer: 50 mM Tris-HCl, 10 mM reduced Glutathione, pH =8.0 in the elution buffer.

Handling Advice: Aliquot to avoid repeated freezing and thawing.

Storage: -80 °C

Storage Comment: Best use within three months from the date of receipt of this protein.

Images

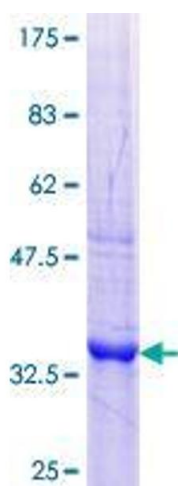


Image 1.