



[Go to Product page](#)

Datasheet for ABIN1350704

## Cathepsin B Protein (CTSB) (AA 224-333) (GST tag)

### 1 Image

#### Overview

Quantity:	10 µg
Target:	Cathepsin B (CTSB)
Protein Characteristics:	AA 224-333
Origin:	Human
Source:	Wheat germ
Protein Type:	Recombinant
Purification tag / Conjugate:	This Cathepsin B protein is labelled with GST tag.
Application:	Western Blotting (WB), ELISA, Antibody Array (AA), Affinity Purification (AP)

#### Product Details

Purpose:	CTSB (Human) Recombinant Protein (Q01)
Sequence:	HYGYNSYSVS NSEKDIMAEI YKNGPVEGAF SVYSDFLLYK SGVYQHVTGE MMGGHAIRIL GWGVENGTPY WLVANSWNTD WGDNGFFKIL RGQDHCIES EVVAGIPRTD
Characteristics:	Human CTSB partial ORF ( AAH10240, 224 a.a. - 333 a.a.) recombinant protein with GST-tag at N-terminal.
Purification:	in vitro wheat germ expression system

#### Target Details

Target:	Cathepsin B (CTSB)
Alternative Name:	CTSB ( <a href="#">CTSB Products</a> )

## Target Details

Background:	Full Gene Name: cathepsin B Synonyms: APPS,CPSB
Gene ID:	1508
Pathways:	<a href="#">Activation of Innate immune Response</a> , <a href="#">Toll-Like Receptors Cascades</a>

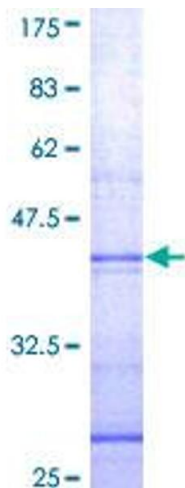
## Application Details

Application Notes:	Optimal working dilution should be determined by the investigator.
Comment:	Preparation method: in vitro, wheat germ expression system Product Quality tested by: 12.5% SDS-PAGE Stained with Coomassie Blue.
Restrictions:	For Research Use only

## Handling

Buffer:	50 mM Tris-HCl, 10 mM reduced Glutathione, pH =8.0 in the elution buffer.
Handling Advice:	Aliquot to avoid repeated freezing and thawing.
Storage:	-80 °C
Storage Comment:	Best use within three months from the date of receipt of this protein.

## Images



**Image 1.**