



[Go to Product page](#)

Datasheet for ABIN1350706

CTSC Protein (AA 1-463) (GST tag)

1 Image

Overview

| | |
|-------------------------------|---|
| Quantity: | 10 µg |
| Target: | CTSC |
| Protein Characteristics: | AA 1-463 |
| Origin: | Human |
| Source: | Wheat germ |
| Protein Type: | Recombinant |
| Purification tag / Conjugate: | This CTSC protein is labelled with GST tag. |
| Application: | Western Blotting (WB), ELISA, Antibody Array (AA), Affinity Purification (AP) |

Product Details

| | |
|------------------|---|
| Purpose: | CTSC (Human) Recombinant Protein (P01) |
| Sequence: | MGAGPSLLLA ALLLLLSGDG AVRCDTPANC TYLDLLGTWV FQVGSSGSQR DVNCSVMGPQ EKKVVVYLQK LDTAYDDLGN SGHFTIYNQ GFEIVLNDYK WFAFFKYKEE GSKVTTYCNE TMTGWVHDVL GRNWACFTGK KVGTAENVY VNTAHLKNSQ EKYSNRLYKY DHNFVKAINA IQKSWTATTY MEYETLTLGD MIRRSGGHSR KIPRPKPAPL TAEIQQKILH LPTSWDWRNV HGINFVSPVR NQASCGSCYS FASMGMLEAR IRILTNNSTQ PILSPQEVVS CSQYAQGCEG GFPYLIAGKY AQDFGLVEEA CFPYTGTDSP CKMKEDCFRY YSSEYHYVGG FYGGCNEALM KLELVHHGPM AVAFEVYDDF LHYKKGIIYHH TGLRDPFNPF ELTNHAVLLV GYGTDASAGM DYWIVKNSWG TGWGENGYFR IRRGTDECAI ESIAVAATPI PKL |
| Characteristics: | Human CTSC full-length ORF (NP_001805.1, 1 a.a. - 463 a.a.) recombinant protein with GST-tag at N-terminal. |

Product Details

Purification: in vitro wheat germ expression system

Target Details

Target: CTSC

Alternative Name: CTSC ([CTSC Products](#))

Background: Full Gene Name: cathepsin C
Synonyms: CPPI,DPP1,DPPI,HMS,JP,JPD,PALS,PLS

Gene ID: 1075

NCBI Accession: [NM_001814](#)

Application Details

Application Notes: Optimal working dilution should be determined by the investigator.

Comment: Preparation method: in vitro, wheat germ expression system
Product Quality tested by: 12.5% SDS-PAGE Stained with Coomassie Blue.

Restrictions: For Research Use only

Handling

Buffer: 50 mM Tris-HCl, 10 mM reduced Glutathione, pH =8.0 in the elution buffer.

Handling Advice: Aliquot to avoid repeated freezing and thawing.

Storage: -80 °C

Storage Comment: Best use within three months from the date of receipt of this protein.

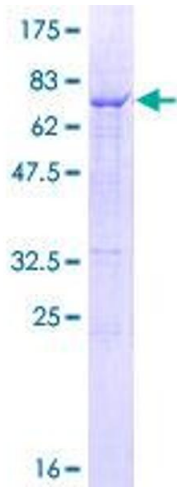


Image 1.