

Datasheet for ABIN1350746  
**CUEDC1 Protein (AA 1-386) (GST tag)**



[Go to Product page](#)

1 Image

Overview

Quantity:	10 µg
Target:	CUEDC1
Protein Characteristics:	AA 1-386
Origin:	Human
Source:	Wheat germ
Protein Type:	Recombinant
Purification tag / Conjugate:	This CUEDC1 protein is labelled with GST tag.
Application:	ELISA, Western Blotting (WB), Antibody Array (AA), Affinity Purification (AP)

Product Details

Purpose:	CUEDC1 (Human) Recombinant Protein (P01)
Sequence:	MTSLFRRSSS GSGGGGTAGA RGGGGGTAAP QELNNSRPAR QVRRLEFNQA MDDFKTMFPN MDYDIECVL RANSGAVDAT IDQLLQMNLE GGGSSGGVYE DSSDSEDSIP PEILERTLEP DSSDEEPPPV YSPPAYHMHV FDRPYPLAPP TPPPRIDALG SGAPTSQRRY RNWNPPLLGN LPDDFLRILP QQLDSIQGNA GGPKPGSGEG CPPAMAGPGP GDQESRWKQY LEDERIALFL QNEEFMKELQ RNRDFLLALE RDRLKYESQK SKSSSVAVGN DFGFSSPVPV TGDANPAVSE DALFRDKLKH MGKSTRRKLF ELARAFSEKT KMRKSKRKHL LKHQSLGAAA STANLLDDVE GHACDEDFRG RRQEAPKVEE GLREGQ
Characteristics:	Human CUEDC1 full-length ORF ( NP_060419.1, 1 a.a. - 386 a.a.) recombinant protein with GST-tag at N-terminal.
Purification:	in vitro wheat germ expression system

## Target Details

Target:	CUEDC1
Alternative Name:	CUEDC1 ( <a href="#">CUEDC1 Products</a> )
Background:	Full Gene Name: CUE domain containing 1 Synonyms: DKFZp547L163,FLJ20739
Gene ID:	404093
NCBI Accession:	<a href="#">NM_017949</a>

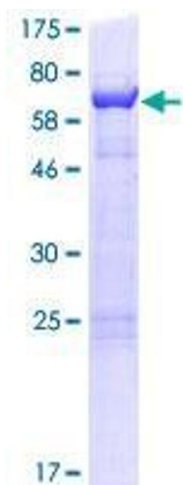
## Application Details

Application Notes:	Optimal working dilution should be determined by the investigator.
Comment:	Preparation method: in vitro, wheat germ expression system Product Quality tested by: 12.5% SDS-PAGE Stained with Coomassie Blue.
Restrictions:	For Research Use only

## Handling

Buffer:	50 mM Tris-HCl, 10 mM reduced Glutathione, pH =8.0 in the elution buffer.
Handling Advice:	Aliquot to avoid repeated freezing and thawing.
Storage:	-80 °C
Storage Comment:	Best use within three months from the date of receipt of this protein.

## Images



**Image 1.**