



[Go to Product page](#)

Datasheet for ABIN1350752

CELF2 Protein (AA 1-521) (GST tag)

1 Image

Overview

Quantity:	10 µg
Target:	CELF2
Protein Characteristics:	AA 1-521
Origin:	Human
Source:	Wheat germ
Protein Type:	Recombinant
Purification tag / Conjugate:	This CELF2 protein is labelled with GST tag.
Application:	ELISA, Western Blotting (WB), Antibody Array (AA), Affinity Purification (AP)

Product Details

Purpose:	CUGBP2 (Human) Recombinant Protein (P01)
Sequence:	MMVEGRLLVP DRINGTANKM NGALDHSDQP DPDAIKMFVG QIPRSWSEKE LKELFEPYGA VYQINVLRRDR SQNPPQSKGC CFVTFYTRKA ALEAQNALHN IKTLPGMHHP IQMKPADSEK SNAVEDRKLFI IGMVSKKCNE NDIRVMFSPF GQIEECRILR GPDGLSRGCA FVTFSTRAMA QNAIKAMHQS QTMEGCSSPI VVKFADTQKD KEQRRLQQQL AQQMQQLNNTA TWGNLTGLGG LTPQYLALLQ QATSSSNLGA FSGIQQMAGM NALQLQNLAT LAAAAAAQTSATSTNANPL STTSSALGAL TSPVAASTPN STAGAAMNSL TSLGTLQGLA GATVGLNNIN ALAGTINTPR SKRLLLPKDN NGMAALNGGL GATGLTNGTA GTMDALTQAY SGIQQYAAAA LPTLYSQSLL QQQSAAGSQK EGPEGANLFI YHLPQEFQDQ DILQMFMPFG NVISAKVFID KQTNLKSCFG FVSYDNPVSA QAAIQAMNGF QIGMKRLKVQ LKRSKNDSKP Y
Characteristics:	Human CUGBP2 full-length ORF (AAH36391.1, 1 a.a. - 521 a.a.) recombinant protein with GST-tag at N-terminal.

Product Details

Purification: in vitro wheat germ expression system

Target Details

Target: CELF2

Alternative Name: CUGBP2 ([CELF2 Products](#))

Background: Full Gene Name: CUG triplet repeat, RNA binding protein 2
Synonyms: BRUNOL3,ETR-3,NAPOR

Gene ID: 10659

Pathways: [Ribonucleoprotein Complex Subunit Organization](#)

Application Details

Application Notes: Optimal working dilution should be determined by the investigator.

Comment: Preparation method: in vitro, wheat germ expression system
Product Quality tested by: 12.5% SDS-PAGE Stained with Coomassie Blue.

Restrictions: For Research Use only

Handling

Buffer: 50 mM Tris-HCl, 10 mM reduced Glutathione, pH =8.0 in the elution buffer.

Handling Advice: Aliquot to avoid repeated freezing and thawing.

Storage: -80 °C

Storage Comment: Best use within three months from the date of receipt of this protein.

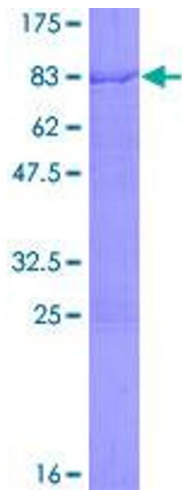


Image 1.