



[Go to Product page](#)

Datasheet for ABIN1350790

CWF19L2 Protein (AA 1-740) (GST tag)

1 Image

Overview

Quantity:	25 µg
Target:	CWF19L2
Protein Characteristics:	AA 1-740
Origin:	Human
Source:	Wheat germ
Protein Type:	Recombinant
Purification tag / Conjugate:	This CWF19L2 protein is labelled with GST tag.
Application:	ELISA, Western Blotting (WB), Antibody Array (AA), Affinity Purification (AP)

Product Details

Purpose:	CWF19L2 (Human) Recombinant Protein (P01)
Sequence:	<p>MTVDFMSVKT VSSSSLKAEK ETMRKIEQEK NQALEQSKLM ERELNPYWKD GGTGLPPEDC</p> <p>SVSSITKVSF VEDGGLSWLR KSYLRMKEQA EKQSRNFEDI VAERYGSMEI FQSKLEDAEK</p> <p>AASKEDYRR ERWRKPTYSD KAQNCQESRE SDLVKYGNSS RDRYATTDTA KNSNNEKFIG</p> <p>DEKDKRPGSL ETCRRESNPR QNQEFSGNL RAKFLRPSDD EELSFHSGR KFEPLSSSSA</p> <p>LVAQGSLCSG FRKPTKNSEE RLTSWSRSDG RGDKKHSNQK PSETSTDEHQ HVPEDPREKS</p> <p>QDEVLRDDPP KKEHLRDTKS TFAGSPERES IHILSVDEKN KLGAKIIKAE MMGNMELAEQ</p> <p>LKVQLEKANK FKETITQIPK KSGVENEDQQ EVILVRTDQS GRVWPVNTPG KSLESQGGRR</p> <p>KRQMVSTHEE RERVRYFHDD DNLSLNDLVK NEKMGTAENQ NKLFRMASK FMGKTDGDY</p> <p>TLDDMFVSKA AERERLGESE ENQRKKAIAE HRSLAAQMEK CLYCFDSSQF PKHLIVAIGV</p> <p>KVYLCLPNVR SLTEGHCLIV PLQHHRAATL LDEDIWEIQQ MFRKSLVKMF EDKGLDCIFL</p> <p>ETNMSMKKQY HMYECIPLP KEVGDMAPIY FKKAIMESDE EWSMNKKLID LSSKDIRKSV</p>

Product Details

PRGLPYFSVD FGLHGGFAHV IEDQHKFPHY FGKEIIGGML DIEPRLWRKG IRESFEDQRK
KALQFAQWWK PYDFTKSKNY

Characteristics: Human CWF19L2 full-length ORF (NP_689647.1, 1 a.a. - 740 a.a.) recombinant protein with GST-tag at N-terminal.

Purification: in vitro wheat germ expression system

Target Details

Target: CWF19L2

Alternative Name: CWF19L2 ([CWF19L2 Products](#))

Background: Full Gene Name: CWF19-like 2, cell cycle control (*S. pombe*)
Synonyms: FLJ32343

Gene ID: 143884

NCBI Accession: [NM_152434](#)

Application Details

Application Notes: Optimal working dilution should be determined by the investigator.

Comment: Preparation method: in vitro, wheat germ expression system
Product Quality tested by: 12.5% SDS-PAGE Stained with Coomassie Blue.

Restrictions: For Research Use only

Handling

Buffer: 50 mM Tris-HCl, 10 mM reduced Glutathione, pH =8.0 in the elution buffer.

Handling Advice: Aliquot to avoid repeated freezing and thawing.

Storage: -80 °C

Storage Comment: Best use within three months from the date of receipt of this protein.

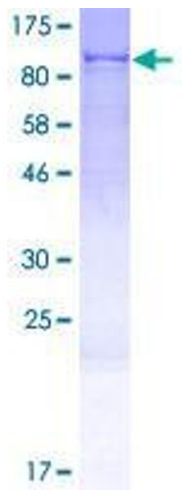


Image 1.