



[Go to Product page](#)

Datasheet for ABIN1350820

CXCL16 Protein (AA 49-273) (GST tag)

1 Image

Overview

Quantity:	10 µg
Target:	CXCL16
Protein Characteristics:	AA 49-273
Origin:	Human
Source:	Wheat germ
Protein Type:	Recombinant
Purification tag / Conjugate:	This CXCL16 protein is labelled with GST tag.
Application:	Western Blotting (WB), ELISA, Antibody Array (AA), Affinity Purification (AP)

Product Details

Purpose:	CXCL16 (Human) Recombinant Protein (P01)
Sequence:	NEGSVTGSCY CGKRISDSDP PSVQFMNRLR KHLRAYHRCL YYTRFQLLSW SVCGGNKDPW VQELMSCLDL KECGHAYSGI VAHQKHLLPT SPPISQASEG ASSDIHTPAQ MLLSTLQSTQ RPTLPVGSLS SDKELTRPNE TTIHTAGHSL AAGPEAGENQ KQPEKNAGPT ARTSATVPVL CLLAIIFILT AALSYVLCKR RRGQSPQSSP DLPVHYIPVA PDSNT
Characteristics:	Human CXCL16 full-length ORF (AAH17588, 49 a.a. - 273 a.a.) recombinant protein with GST-tag at N-terminal.
Purification:	in vitro wheat germ expression system

Target Details

Target:	CXCL16
---------	--------

Target Details

Alternative Name:	CXCL16 (CXCL16 Products)
Background:	Full Gene Name: chemokine (C-X-C motif) ligand 16 Synonyms: CXCLG16,SR-PSOX,SRPSOX
Gene ID:	58191

Application Details

Application Notes:	Optimal working dilution should be determined by the investigator.
Comment:	Preparation method: in vitro, wheat germ expression system Product Quality tested by: 12.5% SDS-PAGE Stained with Coomassie Blue.
Restrictions:	For Research Use only

Handling

Buffer:	50 mM Tris-HCl, 10 mM reduced Glutathione, pH =8.0 in the elution buffer.
Handling Advice:	Aliquot to avoid repeated freezing and thawing.
Storage:	-80 °C
Storage Comment:	Best use within three months from the date of receipt of this protein.

Images

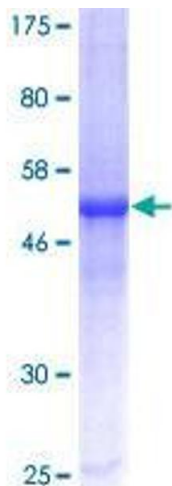


Image 1.