



[Go to Product page](#)

Datasheet for ABIN1350828

CXCL6 Protein (AA 1-114) (GST tag)

1 Image

Overview

Quantity:	10 µg
Target:	CXCL6
Protein Characteristics:	AA 1-114
Origin:	Human
Source:	Wheat germ
Protein Type:	Recombinant
Purification tag / Conjugate:	This CXCL6 protein is labelled with GST tag.
Application:	ELISA, Western Blotting (WB), Antibody Array (AA), Affinity Purification (AP)

Product Details

Purpose:	CXCL6 (Human) Recombinant Protein (P01)
Sequence:	MSLPSSRAAR VPGPSGSLCA LLALLLLLTP PGPLASAGPV SAVLTELRCT CLRVTLRVNP KTIGKLQVFP AGPQCSKVEV VASLKNGKQV CLDPEAPFLK KVIQKILDSG NKKN
Characteristics:	Human CXCL6 full-length ORF (AAH13744, 1 a.a. - 114 a.a.) recombinant protein with GST-tag at N-terminal.
Purification:	in vitro wheat germ expression system

Target Details

Target:	CXCL6
Alternative Name:	CXCL6 (CXCL6 Products)

Target Details

Background:	Full Gene Name: chemokine (C-X-C motif) ligand 6 (granulocyte chemotactic protein 2) Synonyms: CKA-3,GCP-2,GCP2,SCYB6
Gene ID:	6372

Application Details

Application Notes:	Optimal working dilution should be determined by the investigator.
Comment:	Preparation method: in vitro, wheat germ expression system Product Quality tested by: 12.5% SDS-PAGE Stained with Coomassie Blue.
Restrictions:	For Research Use only

Handling

Buffer:	50 mM Tris-HCl, 10 mM reduced Glutathione, pH =8.0 in the elution buffer.
Handling Advice:	Aliquot to avoid repeated freezing and thawing.
Storage:	-80 °C
Storage Comment:	Best use within three months from the date of receipt of this protein.

Images

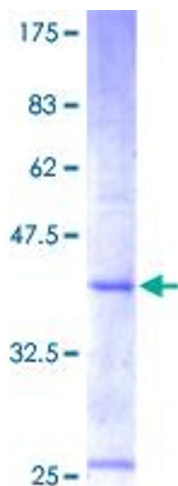


Image 1.