



[Go to Product page](#)

Datasheet for ABIN1350830

## CXCL6 Protein (AA 38-114) (GST tag)

### 1 Image

#### Overview

|                               |   |
|-------------------------------|---|
| Quantity:                     | 10 µg   |
| Target:                       | CXCL6   |
| Protein Characteristics:      | AA 38-114   |
| Origin:                       | Human   |
| Source:                       | Wheat germ  |
| Protein Type:                 | Recombinant   |
| Purification tag / Conjugate: | This CXCL6 protein is labelled with GST tag.                                  |
| Application:                  | ELISA, Western Blotting (WB), Antibody Array (AA), Affinity Purification (AP) |

#### Product Details

|                  |   |
|------------------|---|
| Purpose:         | CXCL6 (Human) Recombinant Protein (Q01)   |
| Sequence:        | GPVSAVLTEL RCTCLRVTLR VNPKTIGKLQ VFPAGPQCSK VEVVASLKNG KQVCLDPEAP<br>FLKKVIQKIL DSGNKKK                 |
| Characteristics: | Human CXCL6 partial ORF ( AAH13744, 38 a.a. - 114 a.a.) recombinant protein with GST-tag at N-terminal. |
| Purification:    | in vitro wheat germ expression system   |

#### Target Details

|                   |  |
|-------------------|--|
| Target:           | CXCL6                                    |
| Alternative Name: | CXCL6 ( <a href="#">CXCL6 Products</a> ) |

## Target Details

|             |  |
|-------------|--|
| Background: | Full Gene Name: chemokine (C-X-C motif) ligand 6 (granulocyte chemotactic protein 2)<br>Synonyms: CKA-3,GCP-2,GCP2,SCYB6 |
| Gene ID:    | 6372   |

## Application Details

|                    |  |
|--------------------|--|
| Application Notes: | Optimal working dilution should be determined by the investigator.   |
| Comment:           | Preparation method: in vitro, wheat germ expression system<br>Product Quality tested by: 12.5% SDS-PAGE Stained with Coomassie Blue. |
| Restrictions:      | For Research Use only  |

## Handling

|                  |   |
|------------------|---|
| Buffer:          | 50 mM Tris-HCl, 10 mM reduced Glutathione, pH =8.0 in the elution buffer. |
| Handling Advice: | Aliquot to avoid repeated freezing and thawing.                           |
| Storage:         | -80 °C  |
| Storage Comment: | Best use within three months from the date of receipt of this protein.    |

## Images

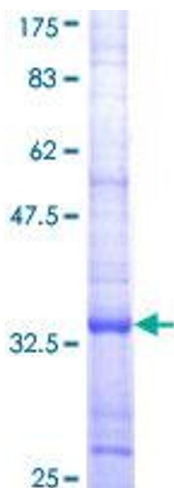


Image 1.