

Datasheet for ABIN1350917
CYLD Protein (AA 854-953) (GST tag)



[Go to Product page](#)

1 Image

Overview

Quantity:	10 µg
Target:	CYLD
Protein Characteristics:	AA 854-953
Origin:	Human
Source:	Wheat germ
Protein Type:	Recombinant
Purification tag / Conjugate:	This CYLD protein is labelled with GST tag.
Application:	Western Blotting (WB), ELISA, Antibody Array (AA), Affinity Purification (AP)

Product Details

Purpose:	CYLD (Human) Recombinant Protein (Q01)
Sequence:	QNMELFAVLC IETSHYVAFV KYGKDDSAWL FFDSMADRDG GQNGFNIPQV TPCPEVGEYL KMSLEDLHSL DSRRIQG CAR RLLCDAYMCM YQSPTMSLYK
Characteristics:	Human CYLD partial ORF (AAH12342, 854 a.a. - 953 a.a.) recombinant protein with GST-tag at N-terminal.
Purification:	in vitro wheat germ expression system

Target Details

Target:	CYLD
Alternative Name:	CYLD (CYLD Products)

Target Details

Background:	Full Gene Name: cylindromatosis (turban tumor syndrome) Synonyms: CDMT,CYLD1,CYLDI,EAC,FLJ20180,FLJ31664,FLJ78684,HSPC057,KIAA0849,MFT,MFT1,SBS,TEM,USPL2
Gene ID:	1540
Pathways:	Apoptosis, Activation of Innate immune Response

Application Details

Application Notes:	Optimal working dilution should be determined by the investigator.
Comment:	Preparation method: in vitro, wheat germ expression system Product Quality tested by: 12.5% SDS-PAGE Stained with Coomassie Blue.
Restrictions:	For Research Use only

Handling

Buffer:	50 mM Tris-HCl, 10 mM reduced Glutathione, pH =8.0 in the elution buffer.
Handling Advice:	Aliquot to avoid repeated freezing and thawing.
Storage:	-80 °C
Storage Comment:	Best use within three months from the date of receipt of this protein.

Images

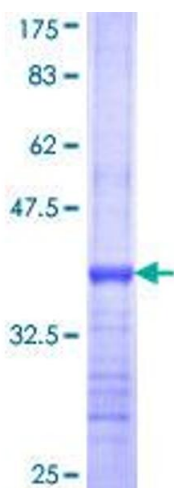


Image 1.