



[Go to Product page](#)

Datasheet for ABIN1350921

## CYorf15B Protein (AA 82-180) (GST tag)

### 1 Image

#### Overview

Quantity:	10 µg
Target:	CYorf15B
Protein Characteristics:	AA 82-180
Origin:	Human
Source:	Wheat germ
Protein Type:	Recombinant
Purification tag / Conjugate:	This CYorf15B protein is labelled with GST tag.
Application:	ELISA, Western Blotting (WB), Antibody Array (AA), Affinity Purification (AP)

#### Product Details

Purpose:	CYorf15B (Human) Recombinant Protein (Q01)
Sequence:	YKVFQIKLER LEKLYKALQI ERNELSEKLG ILKGQVSVKV ADVDLAVPVT HSCADLDSSN MLNTSSKRAP GVHLEADPKG MNEVKCYSKA LSTGSPLGI
Characteristics:	Human CYorf15B partial ORF ( NP_115965, 82 a.a. - 180 a.a.) recombinant protein with GST-tag at N-terminal.
Purification:	in vitro wheat germ expression system

#### Target Details

Target:	CYorf15B
Alternative Name:	CYorf15B ( <a href="#">CYorf15B Products</a> )

## Target Details

Background:	Full Gene Name: chromosome Y open reading frame 15B Synonyms:
Gene ID:	84663
NCBI Accession:	<a href="#">NM_032576</a>

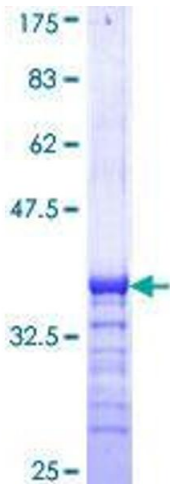
## Application Details

Application Notes:	Optimal working dilution should be determined by the investigator.
Comment:	Preparation method: in vitro, wheat germ expression system Product Quality tested by: 12.5% SDS-PAGE Stained with Coomassie Blue.
Restrictions:	For Research Use only

## Handling

Buffer:	50 mM Tris-HCl, 10 mM reduced Glutathione, pH =8.0 in the elution buffer.
Handling Advice:	Aliquot to avoid repeated freezing and thawing.
Storage:	-80 °C
Storage Comment:	Best use within three months from the date of receipt of this protein.

## Images



**Image 1.**