



[Go to Product page](#)

Datasheet for ABIN1350963

## CYP2B6 Protein (AA 1-491) (GST tag)

### 1 Image

#### Overview

Quantity:	10 µg
Target:	CYP2B6
Protein Characteristics:	AA 1-491
Origin:	Human
Source:	Wheat germ
Protein Type:	Recombinant
Purification tag / Conjugate:	This CYP2B6 protein is labelled with GST tag.
Application:	Western Blotting (WB), ELISA, Antibody Array (AA), Affinity Purification (AP)

#### Product Details

Purpose:	CYP2B6 (Human) Recombinant Protein (P01)
Sequence:	MELSVLLFLA LLTGLLLLLLV QRHPNTHDRL PPGPRPLPLL GNLLQMDDRRG LLKSFLRFRE KYGDVFTVHL GPRPVVMLCG VEAIREALVD KAEAFSGRGK IAMVDPFFRG YGVIFANGNR WKVLRRF SVT TMRDFGMGKR SVEERIQEEA QCLIEELRKS KGALMDPTFL FQSITANIIC SIVFGKRFHY QDQEFLKMLN LFYQTFSLIS SVFGQLFELF SGFLTYFPGA HRQVYKNLQE INAYIGHSVE KHRETLDPSA PKDLIDTYLL HMEEEEKNAH SEFSHQNLNL NTLSLFFAGT ETTSTTLRYG FLLMLKYPHV AERVYREIEQ VIGPHRPPPEL HDRAKMPYTE AVIYEIQRFS DLLPMGVPHI VTQHTSFRGY IIPKDTEVFL ILSTALHDPH YFEKPDAFNP DHFLDANGAL KKTEAFIPFS LGKRICLGEG IARAELFLFF TTILQNF SMA SPVAPEDIDL TPQECGVGKI PPTYQIRFLP R
Characteristics:	Human CYP2B6 full-length ORF ( AAH67431.1, 1 a.a. - 491 a.a.) recombinant protein with GST-tag at N-terminal.

## Product Details

---

Purification: in vitro wheat germ expression system

## Target Details

---

Target: CYP2B6

Alternative Name: CYP2B6 ([CYP2B6 Products](#))

Background: Full Gene Name: cytochrome P450, family 2, subfamily B, polypeptide 6  
Synonyms: CPB6,CYP2B,CYP11B6,I1B1,P450

Gene ID: 1555

## Application Details

---

Application Notes: Optimal working dilution should be determined by the investigator.

Comment: Preparation method: in vitro, wheat germ expression system  
Product Quality tested by: 12.5% SDS-PAGE Stained with Coomassie Blue.

Restrictions: For Research Use only

## Handling

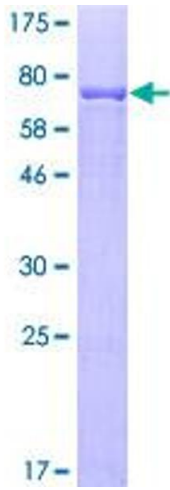
---

Buffer: 50 mM Tris-HCl, 10 mM reduced Glutathione, pH =8.0 in the elution buffer.

Handling Advice: Aliquot to avoid repeated freezing and thawing.

Storage: -80 °C

Storage Comment: Best use within three months from the date of receipt of this protein.



**Image 1.**