



[Go to Product page](#)

Datasheet for ABIN1350976

CYP2E1 Protein (AA 1-493) (GST tag)

1 Image

Overview

Quantity:	25 µg
Target:	CYP2E1
Protein Characteristics:	AA 1-493
Origin:	Human
Source:	Wheat germ
Protein Type:	Recombinant
Purification tag / Conjugate:	This CYP2E1 protein is labelled with GST tag.
Application:	Western Blotting (WB), ELISA, Antibody Array (AA), Affinity Purification (AP)

Product Details

Purpose:	CYP2E1 (Human) Recombinant Protein (P01)
Sequence:	MSALGVTVAL LVWAAFLLLV SMWRQVHSSW NLPPGPFPLP IIGNLFQLEL KNIPKSFTRL AQRFGPVFTL YVGSQRMVVM HGYKAVKEAL LDYKDEFSGR GDLPAFHAHR DRGIIFNNGP TWKDIRRFSL TTLRNYGMGK QGNESRIQRE AHFLLLEALRK TQGQFPDPTF LIGCAPCNVI ADILFRKHFD YNDEKFLRLM YLFNENFHLL STPWLQLYNN FPSFLHYLPG SHRKVIKNVA EVKEYVSERV KEHHQSLDPN CPRDLTDCLL VEMEKEKHS A ERLYTMDGIT VTVADLFFAG TETTSTTLRY GLLILMKYPE IEEKLHEEID RVIGPSRIPA IKDRQEMPYM DAVVHEIQRF ITLVPSNLPH EATRDITFRG YLIPKGTVVV PTLDSVLYDN QEFPDPEKFK PEHFLNEN GK FKYSDFKPF STGKRVCAGE GLARMEFLLL LCAILQHFNL KPLVDPKID LSPHIGFGC IPPRYKLCVI PRS
Characteristics:	Human CYP2E1 full-length ORF (NP_000764.1, 1 a.a. - 493 a.a.) recombinant protein with GST-tag at N-terminal.

Product Details

Purification: in vitro wheat germ expression system

Target Details

Target: CYP2E1

Alternative Name: CYP2E1 ([CYP2E1 Products](#))

Background: Full Gene Name: cytochrome P450, family 2, subfamily E, polypeptide 1
Synonyms: CPE1,CYP2E,P450-J,P450C2E

Gene ID: 1571

NCBI Accession: [NM_000773](#)

Application Details

Application Notes: Optimal working dilution should be determined by the investigator.

Comment: Preparation method: in vitro, wheat germ expression system
Product Quality tested by: 12.5% SDS-PAGE Stained with Coomassie Blue.

Restrictions: For Research Use only

Handling

Buffer: 50 mM Tris-HCl, 10 mM reduced Glutathione, pH =8.0 in the elution buffer.

Handling Advice: Aliquot to avoid repeated freezing and thawing.

Storage: -80 °C

Storage Comment: Best use within three months from the date of receipt of this protein.

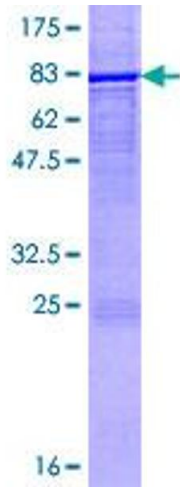


Image 1.