



[Go to Product page](#)

Datasheet for ABIN1351004

## CYP4B1 Protein (AA 1-512) (GST tag)

### 1 Image

#### Overview

Quantity:	10 µg
Target:	CYP4B1
Protein Characteristics:	AA 1-512
Origin:	Human
Source:	Wheat germ
Protein Type:	Recombinant
Purification tag / Conjugate:	This CYP4B1 protein is labelled with GST tag.
Application:	ELISA, Western Blotting (WB), Antibody Array (AA), Affinity Purification (AP)

#### Product Details

Purpose:	CYP4B1 (Human) Recombinant Protein (P01)
Sequence:	MVPSFLSLSF SSLGLWASGL ILVLGFLKLI HLLLRQTLA KAMDKFPGPP THWLFHGALE IQETGSLDKV VSWAHQFPYA HPLWFGQFIG FLNIYEPDYA KAVYSRGDPK APDVYDFFLQ WIGRLLVLE GPKWLQHRKL LTPGFHYDVL KPYVAVFTES TRIMLDKWEE KAREGKSFDI FCDVGHMALN TLMKCTFGRG DTGLGHSRDS SYLAVSDLT LLMQQLVSVF QYHNDFIYWL TPHGRRFLRA CQVAHDHTDQ VIRERKAALQ DEKVRKKIQN RRHLDFLDIL LGARDEDDIK LSDADLRAEV DTFMFEGHDT TTSGISWFLY CMALYPEHQH RCREEVREIL GDQDFFQWDD LGKMTYLTMC IKESFRLYPP VPQVYRQLSK PVTFVDGRSL PAGSLISMHI YALHRNSAVW PDPEVFDCLR FSTENASKRH PFAFMFSAAG PRNCIGQQFA MSEMKVVTAM CLLRFEFSLD PSRLPIKMPQ LVLRSKNGFH LHLKPLGPGS GK
Characteristics:	Human CYP4B1 full-length ORF ( AAH17758.1, 1 a.a. - 512 a.a.) recombinant protein with GST-tag at N-terminal.

## Product Details

---

Purification: in vitro wheat germ expression system

## Target Details

---

Target: CYP4B1

Alternative Name: CYP4B1 ([CYP4B1 Products](#))

Background: Gene: cytochrome P450, family 4, subfamily B, polypeptide 1  
Synonyms: CYP4B1, P-450HP

Gene ID: 1580

## Application Details

---

Application Notes: Optimal working dilution should be determined by the investigator.

Restrictions: For Research Use only

## Handling

---

Buffer: 50 mM Tris-HCl, 10 mM reduced Glutathione, pH =8.0 in the elution buffer.

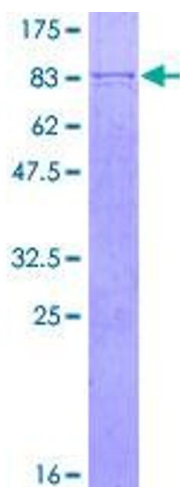
Handling Advice: Aliquot to avoid repeated freezing and thawing.

Storage: -80 °C

Storage Comment: Best use within three months from the date of receipt of this protein.

## Images

---



**Image 1.**