



[Go to Product page](#)

Datasheet for ABIN1351023

## CYP7B1 Protein (AA 203-286) (GST tag)

### 1 Image

#### Overview

Quantity:	10 µg
Target:	CYP7B1
Protein Characteristics:	AA 203-286
Origin:	Human
Source:	Wheat germ
Protein Type:	Recombinant
Purification tag / Conjugate:	This CYP7B1 protein is labelled with GST tag.
Application:	ELISA, Western Blotting (WB), Antibody Array (AA), Affinity Purification (AP)

#### Product Details

Purpose:	CYP7B1 (Human) Recombinant Protein (Q01)
Sequence:	CDNNKFISEL RDDFLKFDDK FAYLVSNIPI ELLGNVKSIR EKIIKCFSSSE KLAKMQGWSE VFQSRQDVLE KYVYVHEDLEI GAHH
Characteristics:	Human CYP7B1 partial ORF ( NP_004811, 203 a.a. - 286 a.a.) recombinant protein with GST-tag at N-terminal.
Purification:	in vitro wheat germ expression system

#### Target Details

Target:	CYP7B1
Alternative Name:	CYP7B1 ( <a href="#">CYP7B1 Products</a> )

## Target Details

Background:	Full Gene Name: cytochrome P450, family 7, subfamily B, polypeptide 1 Synonyms: CBAS3,CP7B,SPG5A
Gene ID:	9420
NCBI Accession:	<a href="#">NM_004820</a>
Pathways:	<a href="#">Intracellular Steroid Hormone Receptor Signaling Pathway</a> , <a href="#">Steroid Hormone Biosynthesis</a> , <a href="#">Regulation of Intracellular Steroid Hormone Receptor Signaling</a>

## Application Details

Application Notes:	Optimal working dilution should be determined by the investigator.
Comment:	Preparation method: in vitro, wheat germ expression system Product Quality tested by: 12.5% SDS-PAGE Stained with Coomassie Blue.
Restrictions:	For Research Use only

## Handling

Buffer:	50 mM Tris-HCl, 10 mM reduced Glutathione, pH =8.0 in the elution buffer.
Handling Advice:	Aliquot to avoid repeated freezing and thawing.
Storage:	-80 °C
Storage Comment:	Best use within three months from the date of receipt of this protein.

## Images

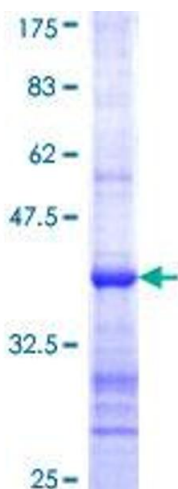


Image 1.