

Datasheet for ABIN1351053  
**NSG1 Protein (AA 1-185) (GST tag)**



[Go to Product page](#)

1 Image

Overview

Quantity:	10 µg
Target:	NSG1 (D4S234E)
Protein Characteristics:	AA 1-185
Origin:	Human
Source:	Wheat germ
Protein Type:	Recombinant
Purification tag / Conjugate:	This NSG1 protein is labelled with GST tag.
Application:	ELISA, Western Blotting (WB), Antibody Array (AA), Affinity Purification (AP)

Product Details

Purpose:	D4S234E (Human) Recombinant Protein (P01)
Sequence:	MVKLGNNFAE KGTKQPLLED GFDTIPLMTP LDVNQLQFPP PDKVVVKTKT EYEPDRKKGK ARPPQIAEFT VSITEGVTER FKVSVLVLFA LAFLTCVVFL VVYKVYKYDR ACPDGFVLKN TQCIPEGLES YYAEQDSSAR EKFYTVINHY NLAKQSITRS VSPWMSVLSE EKLSEQETEA AEKSA
Characteristics:	Human D4S234E full-length ORF ( AAH01745, 1 a.a. - 185 a.a.) recombinant protein with GST-tag at N-terminal.
Purification:	in vitro wheat germ expression system

Target Details

Target:	NSG1 (D4S234E)
Alternative Name:	D4S234E ( <a href="#">D4S234E Products</a> )

## Target Details

Background:	Full Gene Name: DNA segment on chromosome 4 (unique) 234 expressed sequence Synonyms: D4S234,NEEP21,NSG1,P21
Gene ID:	27065

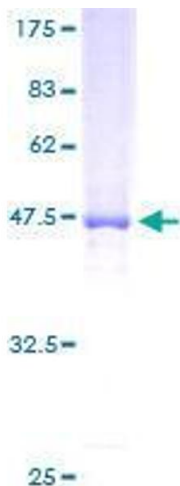
## Application Details

Application Notes:	Optimal working dilution should be determined by the investigator.
Comment:	Preparation method: in vitro, wheat germ expression system Product Quality tested by: 12.5% SDS-PAGE Stained with Coomassie Blue.
Restrictions:	For Research Use only

## Handling

Buffer:	50 mM Tris-HCl, 10 mM reduced Glutathione, pH =8.0 in the elution buffer.
Handling Advice:	Aliquot to avoid repeated freezing and thawing.
Storage:	-80 °C
Storage Comment:	Best use within three months from the date of receipt of this protein.

## Images



**Image 1.**