



[Go to Product page](#)

Datasheet for ABIN1351057

DAAM2 Protein (AA 1-132) (GST tag)

1 Image

Overview

Quantity:	10 µg
Target:	DAAM2
Protein Characteristics:	AA 1-132
Origin:	Human
Source:	Wheat germ
Protein Type:	Recombinant
Purification tag / Conjugate:	This DAAM2 protein is labelled with GST tag.
Application:	Western Blotting (WB), ELISA, Antibody Array (AA), Affinity Purification (AP)

Product Details

Purpose:	DAAM2 (Human) Recombinant Protein (P01)
Sequence:	MAPRKRSHHG LGFLCCFGGS DIPEINLRDN HPLQFMEFSS PIPNAEELNI RFAELVDELD LTDKNREAMF ALPPEKKWQI YCSKPKVPSL TPLATSQGSW HGVALAALAC SCIHLMFITC QPCSRCWRNN SE
Characteristics:	Human DAAM2 full-length ORF (AAH47575.1, 1 a.a. - 132 a.a.) recombinant protein with GST-tag at N-terminal.
Purification:	in vitro wheat germ expression system

Target Details

Target:	DAAM2
Alternative Name:	DAAM2 (DAAM2 Products)

Target Details

Background:	Full Gene Name: dishevelled associated activator of morphogenesis 2 Synonyms: KIAA0381,MGC90515,dJ90A20A.1
Gene ID:	23500

Application Details

Application Notes:	Optimal working dilution should be determined by the investigator.
Comment:	Preparation method: in vitro, wheat germ expression system Product Quality tested by: 12.5% SDS-PAGE Stained with Coomassie Blue.
Restrictions:	For Research Use only

Handling

Buffer:	50 mM Tris-HCl, 10 mM reduced Glutathione, pH =8.0 in the elution buffer.
Handling Advice:	Aliquot to avoid repeated freezing and thawing.
Storage:	-80 °C
Storage Comment:	Best use within three months from the date of receipt of this protein.

Images

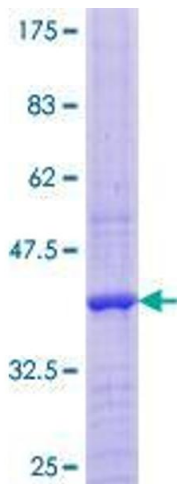


Image 1.