



[Go to Product page](#)

Datasheet for ABIN1351139

DBC1 Protein (AA 1-320) (GST tag)

1 Image

Overview

Quantity:	10 µg
Target:	DBC1 (BRINP1)
Protein Characteristics:	AA 1-320
Origin:	Human
Source:	Wheat germ
Protein Type:	Recombinant
Purification tag / Conjugate:	This DBC1 protein is labelled with GST tag.
Application:	ELISA, Western Blotting (WB), Antibody Array (AA), Affinity Purification (AP)

Product Details

Purpose:	DBC1 (Human) Recombinant Protein (P01)
Sequence:	MNWRFGVLLY FLFIWGRISV QPSHQEPAGT DQHVSKEFDW LISDRGPFHH SRSYLSFVER HRQGFTTRYK IYREFARWKV RNTAIERRDL VRHPVPLMPE FQRSIRLLGR RPTTQQFIDT IIKKYGTHLL ISATLGEEA LTMYMDKSRL DRKSGNATQS VEALHQLASS YFVDRDGTMR RLHEIQISTG AIKVTETRTG PLGCNSYDNL DSVSSVLLQS TESKLHLQGL QIIFPQYLQE KFVQSALSYI MCNGEGEYLC QNSQCRCQCA EEFQCNCPI TDIQIMEYTL ANMAKSWAEA YKDLENSGRE SHSVPLHEWP
Characteristics:	Human DBC1 full-length ORF (AAH21560, 1 a.a. - 320 a.a.) recombinant protein with GST-tag at N-terminal.
Purification:	in vitro wheat germ expression system

Target Details

Target:	DBC1 (BRINP1)
Alternative Name:	DBC1 (BRINP1 Products)
Background:	Full Gene Name: deleted in bladder cancer 1 Synonyms: DBCCR1,FAM5A
Gene ID:	1620

Application Details

Application Notes:	Optimal working dilution should be determined by the investigator.
Comment:	Preparation method: in vitro, wheat germ expression system Product Quality tested by: 12.5% SDS-PAGE Stained with Coomassie Blue.
Restrictions:	For Research Use only

Handling

Buffer:	50 mM Tris-HCl, 10 mM reduced Glutathione, pH =8.0 in the elution buffer.
Handling Advice:	Aliquot to avoid repeated freezing and thawing.
Storage:	-80 °C
Storage Comment:	Best use within three months from the date of receipt of this protein.

Images

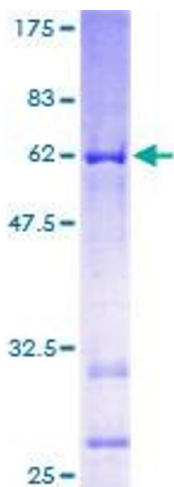


Image 1.