



[Go to Product page](#)

Datasheet for ABIN1351198

DCLRE1C Protein (AA 1-434) (GST tag)

1 Image

Overview

Quantity:	25 µg
Target:	DCLRE1C
Protein Characteristics:	AA 1-434
Origin:	Human
Source:	Wheat germ
Protein Type:	Recombinant
Purification tag / Conjugate:	This DCLRE1C protein is labelled with GST tag.
Application:	ELISA, Western Blotting (WB), Antibody Array (AA), Affinity Purification (AP)

Product Details

Purpose:	DCLRE1C (Human) Recombinant Protein (P01)
Sequence:	MSSFEGQMAE YPTISIDRFD RENLRARAYF LSHCHKDHMK GLRAPTLKRR LECSLKVYLY CSPVTKELLL TSPKYRFWKK RIISIEIETP TQISLVDEAS GEKEEIVVTL LPAGHCPSV MFLFQGNGT VLYTGDFRLA QGEAARMELL HSGGRVKDIQ SVYLDTTFCF PRFYQIPSRE ECLSGVLELV RSWITRSPYH VVWLNCKAAY GYEYLFNTLS EELGVQVHVN KLDMFRNMPE ILRHLLTDRN TQIHACRHPK AEEYFQWSKL PCGITSRNRI PLHIISIKPS TMWFGERSRK TNVIVRTGES SYRACFSFHS SYSEIKDFLS YLCPVNAYPN VIPVGTMDK VVEILKPLCR SSQSTEPKYK PLGKLRART VHRDSGSHSV TQARMRWCHH DSYLPLTPI KRSSCLSLLT SWITGAYRHA QLMI
Characteristics:	Human DCLRE1C full-length ORF (AAH22254, 1 a.a. - 434 a.a.) recombinant protein with GST-tag at N-terminal.

Product Details

Purification: in vitro wheat germ expression system

Target Details

Target: DCLRE1C

Alternative Name: DCLRE1C ([DCLRE1C Products](#))

Background: Full Gene Name: DNA cross-link repair 1C (PSO2 homolog, *S. cerevisiae*)
Synonyms: A-SCID,DCLREC1C,FLJ11360,FLJ36438,RS-SCID,SCIDA,SNM1C

Gene ID: 64421

Pathways: [DNA Damage Repair](#)

Application Details

Application Notes: Optimal working dilution should be determined by the investigator.

Comment: Preparation method: in vitro, wheat germ expression system
Product Quality tested by: 12.5% SDS-PAGE Stained with Coomassie Blue.

Restrictions: For Research Use only

Handling

Buffer: 50 mM Tris-HCl, 10 mM reduced Glutathione, pH =8.0 in the elution buffer.

Handling Advice: Aliquot to avoid repeated freezing and thawing.

Storage: -80 °C

Storage Comment: Best use within three months from the date of receipt of this protein.

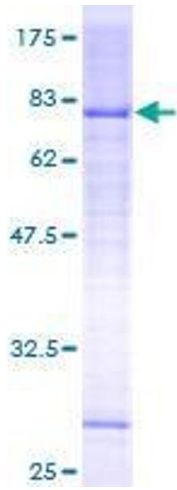


Image 1.