

Datasheet for ABIN1351199
DCLRE1C Protein (AA 481-577) (GST tag)



[Go to Product page](#)

1 Image

Overview

Quantity:	10 µg
Target:	DCLRE1C
Protein Characteristics:	AA 481-577
Origin:	Human
Source:	Wheat germ
Protein Type:	Recombinant
Purification tag / Conjugate:	This DCLRE1C protein is labelled with GST tag.
Application:	ELISA, Western Blotting (WB), Antibody Array (AA), Affinity Purification (AP)

Product Details

Purpose:	DCLRE1C (Human) Recombinant Protein (Q01)
Sequence:	ICPKDTYS DL KSRDKDVTIV PSTGEP T T L S SETHIPEEKS LLNLSTNADS QSSSDFEVPS TPEAELPKRE HLQYLYEKLA TGESIAVKKR KCSLLDT
Characteristics:	Human DCLRE1C partial ORF (NP_071932.2, 481 a.a. - 577 a.a.) recombinant protein with GST-tag at N-terminal.
Purification:	in vitro wheat germ expression system

Target Details

Target:	DCLRE1C
Alternative Name:	DCLRE1C (DCLRE1C Products)

Target Details

Background:	Full Gene Name: DNA cross-link repair 1C (PSO2 homolog, <i>S. cerevisiae</i>) Synonyms: A-SCID,DCLREC1C,FLJ11360,FLJ36438,RS-SCID,SCIDA,SNM1C
Gene ID:	64421
NCBI Accession:	NM_022487
Pathways:	DNA Damage Repair

Application Details

Application Notes:	Optimal working dilution should be determined by the investigator.
Comment:	Preparation method: in vitro, wheat germ expression system Product Quality tested by: 12.5% SDS-PAGE Stained with Coomassie Blue.
Restrictions:	For Research Use only

Handling

Buffer:	50 mM Tris-HCl, 10 mM reduced Glutathione, pH =8.0 in the elution buffer.
Handling Advice:	Aliquot to avoid repeated freezing and thawing.
Storage:	-80 °C
Storage Comment:	Best use within three months from the date of receipt of this protein.

Images

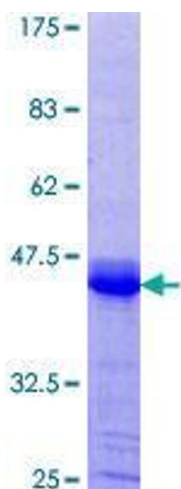


Image 1.