



[Go to Product page](#)

Datasheet for ABIN1351235

## DCUN1D1 Protein (AA 1-89) (GST tag)

### 1 Image

#### Overview

Quantity:	10 µg
Target:	DCUN1D1
Protein Characteristics:	AA 1-89
Origin:	Human
Source:	Wheat germ
Protein Type:	Recombinant
Purification tag / Conjugate:	This DCUN1D1 protein is labelled with GST tag.
Application:	Western Blotting (WB), ELISA, Antibody Array (AA), Affinity Purification (AP)

#### Product Details

Purpose:	RP42 (Human) Recombinant Protein (Q01)
Sequence:	MNKLKSSQKD KVRQFMIFTQ SSEKTAVSCL SQNDWKLDVA TDNFFQNPEL YIRESVKGSL DRKKLEQLYN RYKDPQDENK IGIDGIQQF
Characteristics:	Human RP42 partial ORF ( NP_065691, 1 a.a. - 89 a.a.) recombinant protein with GST-tag at N-terminal.
Purification:	in vitro wheat germ expression system

#### Target Details

Target:	DCUN1D1
Alternative Name:	DCUN1D1 ( <a href="#">DCUN1D1 Products</a> )

## Target Details

Background:	Full Gene Name: DCN1, defective in cullin neddylation 1, domain containing 1 ( <i>S. cerevisiae</i> ) Synonyms: DCUN1L1,RP42,SCCRO,SCRO,Tes3
Gene ID:	54165
NCBI Accession:	<a href="#">NM_020640</a>

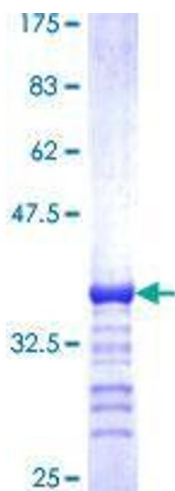
## Application Details

Application Notes:	Optimal working dilution should be determined by the investigator.
Comment:	Preparation method: in vitro, wheat germ expression system Product Quality tested by: 12.5% SDS-PAGE Stained with Coomassie Blue.
Restrictions:	For Research Use only

## Handling

Buffer:	50 mM Tris-HCl, 10 mM reduced Glutathione, pH =8.0 in the elution buffer.
Handling Advice:	Aliquot to avoid repeated freezing and thawing.
Storage:	-80 °C
Storage Comment:	Best use within three months from the date of receipt of this protein.

## Images



**Image 1.**