



Datasheet for ABIN1351254  
**DDAH2 Protein (AA 1-285) (GST tag)**



[Go to Product page](#)

1 Image

Overview

Quantity:	25 µg
Target:	DDAH2
Protein Characteristics:	AA 1-285
Origin:	Human
Source:	Wheat germ
Protein Type:	Recombinant
Purification tag / Conjugate:	This DDAH2 protein is labelled with GST tag.
Application:	Western Blotting (WB), ELISA, Antibody Array (AA), Affinity Purification (AP)

Product Details

Purpose:	DDAH2 (Human) Recombinant Protein (P01)
Sequence:	MGTPGEGGLGR CSHALIRGVP ESLASGEGAG AGLPALDLAK AQREHGVLLGG KLRQRLGLRL LELPPEESLP LGPLLGD TAV IQGDTALITR PWSPARRPEV DGVRKALQDL GLRIVEIGDE NATLDGTDVL FTGREFFVGL SKWTNHRGAE IVADTFRDFA VSTVPVSGPS HLRGLCGMGG PRTVVAGSSD AAQKAVRAMA VLTDHPYASL TLPDDAAADC LFLRPGLPGV PPFLLRGGG DLPNSQEALQ KLSDVTLVPV SCSELEKAGA GLSSLCLVLS TRPHS
Characteristics:	Human DDAH2 full-length ORF ( AAH01435, 1 a.a. - 285 a.a.) recombinant protein with GST-tag at N-terminal.
Purification:	in vitro wheat germ expression system

## Target Details

Target:	DDAH2
Alternative Name:	DDAH2 ( <a href="#">DDAH2 Products</a> )
Background:	Full Gene Name: dimethylarginine dimethylaminohydrolase 2 Synonyms: DDAH,DDAHII,G6a,NG30
Gene ID:	23564

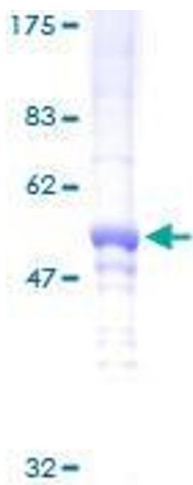
## Application Details

Application Notes:	Optimal working dilution should be determined by the investigator.
Comment:	Preparation method: in vitro, wheat germ expression system Product Quality tested by: 12.5% SDS-PAGE Stained with Coomassie Blue.
Restrictions:	For Research Use only

## Handling

Buffer:	50 mM Tris-HCl, 10 mM reduced Glutathione, pH =8.0 in the elution buffer.
Handling Advice:	Aliquot to avoid repeated freezing and thawing.
Storage:	-80 °C
Storage Comment:	Best use within three months from the date of receipt of this protein.

## Images



**Image 1.**