

Datasheet for ABIN135127
anti-ITGAL antibody (PE)



[Go to Product page](#)

2 Images

Overview

Quantity:	0.1 mg
Target:	ITGAL
Reactivity:	Mouse
Host:	Rat
Clonality:	Monoclonal
Conjugate:	This ITGAL antibody is conjugated to PE
Application:	Flow Cytometry (FACS)

Product Details

Immunogen:	Whole BW5147 cells
Clone:	I21-7
Isotype:	IgG2a
Specificity:	Mouse/Human CD11a, Mr 180 kDa
Characteristics:	Rat Anti-Mouse CD11a-PE

Target Details

Target:	ITGAL
Alternative Name:	CD11a (ITGAL Products)
Pathways:	Activated T Cell Proliferation , Integrin Complex

Application Details

Application Notes:	<ul style="list-style-type: none">• Applications: FC - Quality tested , IHC-FS - Reported in literature , ICC - Reported in literature , IP - Reported in literature , Block - Reported in literature• Working Dilutions: Flow Cytometry FITC and BIOT conjugates 1 g/106 cells PE and PE/CY7 conjugates 0.2 g/106 cells For flow cytometry, the suggested use of these reagents is in a final volume of 100 L
--------------------	---

Sample Volume:	1 mL
Restrictions:	For Research Use only

Handling

Concentration:	0.1 mg/mL
Buffer:	0.1 mg in 1.0 mL of PBS/Sodium azide and a stabilizing agent
Preservative:	Sodium azide
Precaution of Use:	This product contains Sodium azide: a POISONOUS AND HAZARDOUS SUBSTANCE which should be handled by trained staff only.
Handling Advice:	<p>Do not freeze!</p> <p>Protect conjugated products from light.</p> <p>Each reagent is stable for the period shown on the bottle label if stored as directed.</p>
Storage:	4 °C
Storage Comment:	Store at 2-8°C

Images

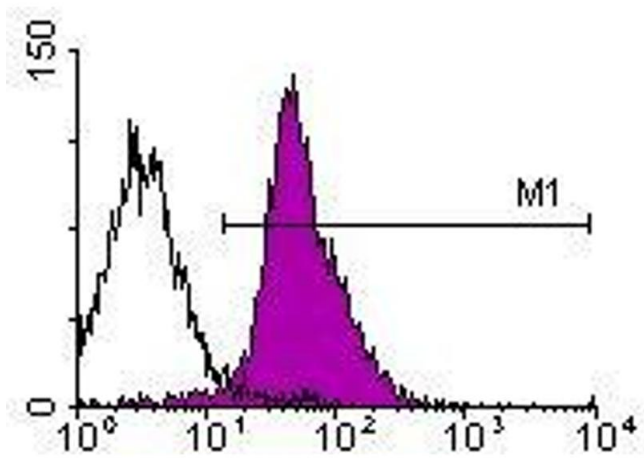
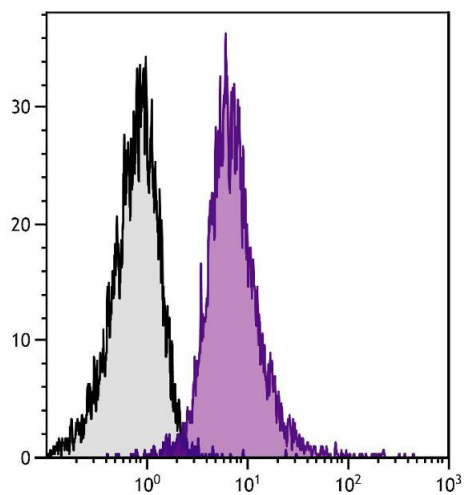


Image 1.



Flow Cytometry

Image 2. BALB/c mouse splenocytes were stained with Rat Anti-Mouse CD11a-PE/CY7.