

Datasheet for ABIN1351270
DDHD2 Protein (AA 1-711) (GST tag)



[Go to Product page](#)

1 Image

Overview

Quantity:	10 µg
Target:	DDHD2
Protein Characteristics:	AA 1-711
Origin:	Human
Source:	Wheat germ
Protein Type:	Recombinant
Purification tag / Conjugate:	This DDHD2 protein is labelled with GST tag.
Application:	ELISA, Western Blotting (WB), Antibody Array (AA), Affinity Purification (AP)

Product Details

Purpose:	DDHD2 (Human) Recombinant Protein (P01)
Sequence:	MSSVQSQQEQ LSQSDPSPSP NSCSSFELID MDAGSLYEPV SPHWFYCKII DSKETWIPFN SEDSQGLEEA YSSGKGCNGR VVPTDGGRYD VHLGERMRYA VYWDELASEV RRCTWIFYKGD KDNKYVPYSE SFSQVLEETY MLAVTLDEWK KKLESPNREI IILHNPKLMV HYQPVAGSDD WGSTPTEQGR PRTVKRGVEN ISVDIHCGEF LQIDHLVFFV HGIGPACDLR FRSIVQCVND FRSVSLNLLQ THFKKAQENQ QIGRVEFLPV NWHSPHSTG VDVDLQRITL PSINRLRHFT NDTILDVFFY NSPTYCQTIV DTVASEMNRI YTLFLQRNPD FKGGSVIAGH SLGSLILFDI LTNQKDSLGD IDSEKDSLNI VMDQGDPTL EEDLKKLQLS EFFDIFEKEK VDKEALALCT DRDLQEIGIP LGPRKKILNY FSTRKNSMGI KRPAPQPASG ANIPKESEFC SSSNTRNGDY LDVGIGQVSV KYPRLIYKPE IFFAFGSPIG MFLTVRGLKR IDPNYRFPTC KGGFNIIYHPF DPVAYRIEPM VVPGVEFEPM LIPHHKGRKR MHLELREGLT RMSMDLKNL LGSLRMAWKS FTRAPYPALQ ASETPEETEA EPESTSEKPS DVNTEETSVA VKEEVLPIV GMLNGGQRID

Product Details

YVLQEKPIES FNEYLFALQS HLCYWESEDV VLLVLKEIYQ TQGIFLDQPL Q

Characteristics:	Human DDHD2 full-length ORF (NP_056029.1, 1 a.a. - 711 a.a.) recombinant protein with GST-tag at N-terminal.
Purification:	in vitro wheat germ expression system

Target Details

Target:	DDHD2
Alternative Name:	DDHD2 (DDHD2 Products)
Background:	Full Gene Name: DDHD domain containing 2 Synonyms: KIAA0725,SAMWD1
Gene ID:	23259
NCBI Accession:	NM_015214

Application Details

Application Notes:	Optimal working dilution should be determined by the investigator.
Comment:	Preparation method: in vitro, wheat germ expression system Product Quality tested by: 12.5% SDS-PAGE Stained with Coomassie Blue.
Restrictions:	For Research Use only

Handling

Buffer:	50 mM Tris-HCl, 10 mM reduced Glutathione, pH =8.0 in the elution buffer.
Handling Advice:	Aliquot to avoid repeated freezing and thawing.
Storage:	-80 °C
Storage Comment:	Best use within three months from the date of receipt of this protein.

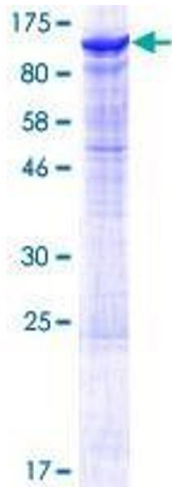


Image 1.