



[Go to Product page](#)

Datasheet for ABIN1351272

DDI1 Protein (AA 1-396) (GST tag)

1 Image

Overview

Quantity:	10 µg
Target:	DDI1
Protein Characteristics:	AA 1-396
Origin:	Human
Source:	Wheat germ
Protein Type:	Recombinant
Purification tag / Conjugate:	This DDI1 protein is labelled with GST tag.
Application:	ELISA, Western Blotting (WB), Antibody Array (AA), Affinity Purification (AP)

Product Details

Purpose:	DDI1 (Human) Recombinant Protein (P01)
Sequence:	MLITVYCVRR DLSEVTFSLQ VSPDFELRNF KVLCEAESRV PVEEIQIIHM ERLIEDHCS LGSYGLKDG D IVLLQKDNV GPRAPGRAPN QPRVDFSGIA VPGTSSSRPQ HPGQQQRTTP AAQRSQGLAS GEKVAGLQGL GSPALIRSM L LSNPHDLSLL KERNPLAEA LLSGSLETFS QVLMEQQREK ALREQERLRL YTADPLDREA QAKIEEEIRQ QNIEENMNIA IEEAPESFGQ VTMLYINCKV NGHPLKAFVD SGAQMTIMSQ ACAERCNIMR LVDRRWAGVA KGVGTQRIIG RVHLAQIQIE GDFLQCSFSI LEDQPM DMLL GLDMLRRHQ C SIDLKKNVLV IGTGTGTQTYF LPEGELPLCS RMVSGQDESS DKEITHSVMD SGRKEH
Characteristics:	Human DDI1 full-length ORF (NP_001001711.1, 1 a.a. - 396 a.a.) recombinant protein with GST-tag at N-terminal.
Purification:	in vitro wheat germ expression system

Target Details

Target:	DDI1
Alternative Name:	DDI1 (DDI1 Products)
Background:	Full Gene Name: DDI1, DNA-damage inducible 1, homolog 1 (<i>S. cerevisiae</i>) Synonyms: FLJ36017
Gene ID:	414301
NCBI Accession:	NM_001001711

Application Details

Application Notes:	Optimal working dilution should be determined by the investigator.
Comment:	Preparation method: in vitro, wheat germ expression system Product Quality tested by: 12.5% SDS-PAGE Stained with Coomassie Blue.
Restrictions:	For Research Use only

Handling

Buffer:	50 mM Tris-HCl, 10 mM reduced Glutathione, pH =8.0 in the elution buffer.
Handling Advice:	Aliquot to avoid repeated freezing and thawing.
Storage:	-80 °C
Storage Comment:	Best use within three months from the date of receipt of this protein.

Images

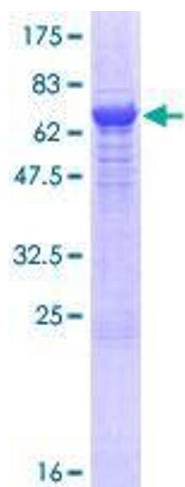


Image 1.