



[Go to Product page](#)

Datasheet for ABIN1351286

DDIT4L Protein (AA 1-193) (GST tag)

1 Image

Overview

Quantity:	25 µg
Target:	DDIT4L
Protein Characteristics:	AA 1-193
Origin:	Human
Source:	Wheat germ
Protein Type:	Recombinant
Purification tag / Conjugate:	This DDIT4L protein is labelled with GST tag.
Application:	ELISA, Western Blotting (WB), Antibody Array (AA), Affinity Purification (AP)

Product Details

Purpose:	DDIT4L (Human) Recombinant Protein (P01)
Sequence:	MVATGSLSSK NPASISELLD CGYHPESLLS DFDYWDYVWP EPNLNEVIFE ESTCQNLVKM LENCLSKSKQ TKLGCSKVLV PEKLTQRIAQ DVLRLSSTEP CGLRGCVMHV NLEIENVCKK LDRIVCDSSV VPTFELTLVF KQENCWTSF RDIFFSRGRF SSGFRRTLIL SSGFRLVKKK LYSLIGTTVI EGS
Characteristics:	Human DDIT4L full-length ORF (NP_660287.1, 1 a.a. - 193 a.a.) recombinant protein with GST-tag at N-terminal.
Purification:	in vitro wheat germ expression system

Target Details

Target:	DDIT4L
---------	--------

Target Details

Alternative Name:	DDIT4L (DDIT4L Products)
Background:	Full Gene Name: DNA-damage-inducible transcript 4-like Synonyms: REDD2,Rtp801L
Gene ID:	115265
NCBI Accession:	NM_145244

Application Details

Application Notes:	Optimal working dilution should be determined by the investigator.
Comment:	Preparation method: in vitro, wheat germ expression system Product Quality tested by: 12.5% SDS-PAGE Stained with Coomassie Blue.
Restrictions:	For Research Use only

Handling

Buffer:	50 mM Tris-HCl, 10 mM reduced Glutathione, pH =8.0 in the elution buffer.
Handling Advice:	Aliquot to avoid repeated freezing and thawing.
Storage:	-80 °C
Storage Comment:	Best use within three months from the date of receipt of this protein.

Images

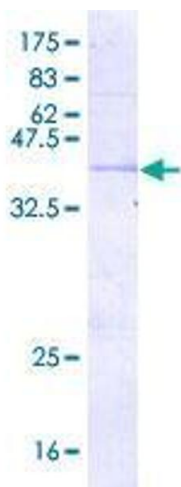


Image 1.