

Datasheet for ABIN1351287

## DDIT4L Protein (AA 94-193) (GST tag)



[Go to Product page](#)

### 1 Image

#### Overview

Quantity:	10 µg
Target:	DDIT4L
Protein Characteristics:	AA 94-193
Origin:	Human
Source:	Wheat germ
Protein Type:	Recombinant
Purification tag / Conjugate:	This DDIT4L protein is labelled with GST tag.
Application:	ELISA, Western Blotting (WB), Antibody Array (AA), Affinity Purification (AP)

#### Product Details

Purpose:	DDIT4L (Human) Recombinant Protein (Q01)
Sequence:	RLSSTEPCGL RGCVMHVNLE IENVCKKLDL IVCDSSVPT FELTLVFKQE NCSWTSFRDF FFSRGRFSSG FRRTLILSSG FRLVKKKLYS LIGTTVIEGS
Characteristics:	Human DDIT4L partial ORF ( NP_660287, 94 a.a. - 193 a.a.) recombinant protein with GST-tag at N-terminal.
Purification:	in vitro wheat germ expression system

#### Target Details

Target:	DDIT4L
Alternative Name:	DDIT4L ( <a href="#">DDIT4L Products</a> )

## Target Details

---

Background:	Full Gene Name: DNA-damage-inducible transcript 4-like Synonyms: REDD2,Rtp801L
Gene ID:	115265
NCBI Accession:	<a href="#">NM_145244</a>

## Application Details

---

Application Notes:	Optimal working dilution should be determined by the investigator.
Comment:	Preparation method: in vitro, wheat germ expression system Product Quality tested by: 12.5% SDS-PAGE Stained with Coomassie Blue.
Restrictions:	For Research Use only

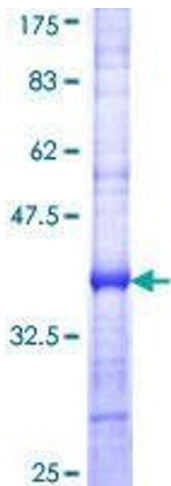
## Handling

---

Buffer:	50 mM Tris-HCl, 10 mM reduced Glutathione, pH =8.0 in the elution buffer.
Handling Advice:	Aliquot to avoid repeated freezing and thawing.
Storage:	-80 °C
Storage Comment:	Best use within three months from the date of receipt of this protein.

## Images

---



**Image 1.**